



## Changes to NSW Road Rules

**From 1 July 2008** there will be changes to the NSW Road Rules. There are some minor amendments to existing rules and there are also new rules which will attract fines and/or demerit points. These changes have been agreed nationally and will affect all road users.

This brochure contains details on some of the main changes and amendments to the NSW Road Rules.



For the full set of changes and amendments to the road rules please visit

[www.rta.nsw.gov.au/roadrules](http://www.rta.nsw.gov.au/roadrules)

or call 13 22 13.

**ALL NEW FINE AMOUNTS LISTED IN THIS BROCHURE ARE EFFECTIVE FROM 1 JULY 2008.**



# Changes to NSW Road Rules



### Roads and Traffic Authority

The information in this brochure is intended as a guide only and is subject to change at any time without notice. It does not replace the relevant legislation.

For further enquiries

[www.rta.nsw.gov.au](http://www.rta.nsw.gov.au) | 13 22 13

June 2008  
RTA/Pub08.154

Stock No. 45094774

## New bicycle storage areas at intersections

Some intersections that have traffic lights may now contain bicycle storage areas. These are painted areas on the road in front of the stop line that allow cyclists to wait at the traffic lights in safety.

There are a number of new rules relating to driver and cyclist responsibilities at bicycle storage areas. For example, when traffic lights or arrows are red, drivers must not allow any part of their vehicle to enter the bicycle storage area.

**PENALTY:** Three demerit points (four in a school zone) and a \$324 fine (\$405 in a school zone).

## Hook turns by bicycle riders

When a cyclist chooses to do a hook turn at an intersection and a bicycle hook turn storage area is provided, they must now use that area.

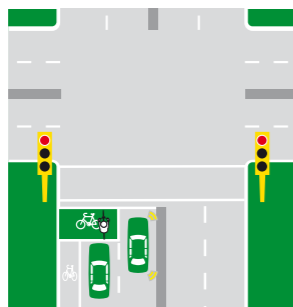
Cyclists should keep to the left when riding across the intersection to enter the bicycle hook turn storage area, turn right and wait in the storage area until the traffic light shows green (if you are at traffic lights) or if there are no lights, until it is safe to cross.

**PENALTY:** \$54 fine.

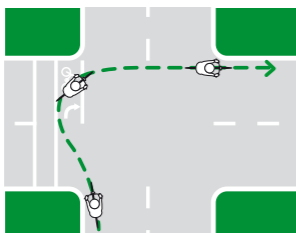
## Entering blocked crossings

You cannot drive your vehicle on to a children's crossing, marked foot crossing or pedestrian crossing if you cannot drive through the crossing because the road beyond the crossing is blocked.

**PENALTY:** Two demerit points (three in a school zone) and a \$189 fine (\$243 in a school zone).



In this example the green area in front of the car is an example of a bicycle storage area.



In this diagram the bicycle rider is making a correct hook turn at an intersection with a bicycle hook turn storage area.

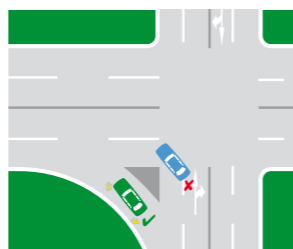
## Turning left at a slip lane

Slip lanes are used to improve safety and traffic flow for vehicles turning left. You must now use a slip lane where one is provided when turning left.

**PENALTY:** Two demerit points and a \$189 fine.

Unless there are signs to indicate parking, you must not stop in a slip lane.

**PENALTY:** \$135 fine.



The green car is correctly using a slip lane.

## Long vehicles entering and exiting roundabouts

A vehicle may now enter and exit a roundabout in either lane or both lanes if ALL of the conditions below are adhered to:

- The vehicle is 7.5 metres or longer (including any load or projections).
- The vehicle displays a 'do not overtake turning vehicle' sign.
- The vehicle is within 50 metres of the nearest point of the roundabout.
- It is not practical for the driver to leave the roundabout more than halfway around it from within the right lane or less than halfway around it from the left lane.

Drivers must give way to vehicles entering or exiting the roundabout that are in accordance with this rule.

**PENALTY:** Two demerit points and a \$189 fine.

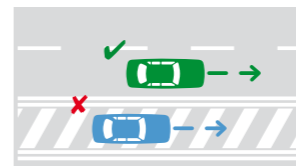
## Driving on or across a continuous white edge line

You may now only drive on, across or outside edge lines for up to a maximum of 100 metres in certain situations, including when turning at an intersection, entering or leaving the road, or stopping at the side of the road.

**PENALTY:** Two demerit points and a \$189 fine for a light vehicle. Two demerit points and a \$189 fine for a heavy vehicle. Four demerit points and a \$972 fine for a heavy vehicle in a Safe-T-Cam zone.

## Keeping off a painted island

You can now only drive on a painted island for **up to 50 metres** if you are entering or leaving the road, or entering a turning lane that begins immediately after the painted island. You still must not drive on a section of painted road that is surrounded by double lines.



In this example, the blue car is illegally travelling on a painted island surrounded by double lines.

**PENALTY:** Two demerit points and a \$189 fine. \$54 fine for bicycles.

It is now illegal to park on a painted island.

**PENALTY:** \$135 fine.

## Arrester beds

Arrester beds are used by heavy vehicles in case of emergencies such as brake failure. Arrester beds contain sand and are level with the road surface. Drivers must not drive in arrester beds or safety ramps unless necessary for safety reasons.



Example of arrester bed sign

**PENALTY:** \$189 fine.

## Mobility impaired drivers

Mobility Parking Permit holders are now allowed to stop for up to five minutes (previously two minutes) to pick up or set down passengers in a no parking zone. All other drivers can remain for two minutes only.

**PENALTY:** \$81 fine. Two demerit points and a \$135 fine if within a school zone.

## Riding on motorbikes

Any passenger carried on a motorbike (not in a sidecar) must be eight years of age or older. Children under eight are only allowed to be carried in the sidecar of a motorbike. Sidecars must NOT be operated if:

- The passenger is not safely seated.
- The passenger is not wearing an approved helmet.

**PENALTY:** Three demerit points and a \$243 fine. Passenger offence is a \$243 fine.

## Wheeled recreational devices

A person must not ride a wheeled recreational device (e.g. rollerblades, skateboard etc.) or wheeled toy (e.g. pedal car, tricycle etc.) past a 'No wheeled recreational devices or toys' sign.



Wheeled recreational devices are not to be used on a road with a dividing line or median strip or on a road with a speed limit greater than 50km per hour (previously the speed limit was 60km per hour).

A person must not travel in or on a wheeled recreational device or wheeled toy that is being towed by a vehicle. A person travelling in or on a wheeled recreational device or toy must also not hold on to a vehicle while it is moving or travel within 2 metres of the rear of a moving vehicle.

**PENALTY:** \$54 fine.



Example of no wheeled recreational devices sign.

## Driver to have proper control of a vehicle

A driver must not drive with a person or animal in the driver's lap. The rider of a motorbike must not ride with an animal on the fuel tank. This does not apply to a person who travels less than 500 metres for the purposes of farming.

**PENALTY:** Three demerit points (four in a school zone) and a \$324 fine (\$405 in a school zone).

**For the full set of changes and amendments to the road rules please visit**

**[www.rta.nsw.gov.au/roadrules](http://www.rta.nsw.gov.au/roadrules)**

**or call 13 22 13.**