



PEDESTRIAN ACCESS AND MOBILITY PLAN

STAGE 2

Shoalhaven Pedestrian Access & Mobility Plan (PAMP) Stage 2 & Review of Shoalhaven Bicycle Strategy

Table of Contents

1. Introduction and Study Area	1
2. Study Tasks	3
2.1 Review of Shoalhaven PAMP Stage 1	4
2.2 Review of Shoalhaven Bicycle Strategy 1997	4
2.3 NSW Coastline Cycleway Route	4
2.4 Site Inspections of Existing and Proposed Routes	5
2.5 PAMP Scoring Criteria	7
2.6 Spreadsheet of the Existing and Proposed Routes for Implementation	9
2.7 Maps of Study Area Illustrating Existing and Proposed Routes	10
2.8 Consultation	10
2.9 The Proposed PAMP Bicycle Route Priorities and Proposed 3 Year New Footpath Capital Program	11
3. Conclusions	13

List of Figures

Figure 1: Study Area	2
----------------------	---

List of Tables

Table 1: PAMP Scoring Criteria	8
--------------------------------	---

List of Appendices

Appendix 1: Spreadsheet of Proposed Projects	
Appendix 2: Maps of Locations with Proposed Facilities and Existing Facilities	
Appendix 3: Letter for Preliminary Input by the Community	
Appendix 4: Draft 5 Year Footpath & Bicycle Capital Works Programs	

1. Introduction and Study Area

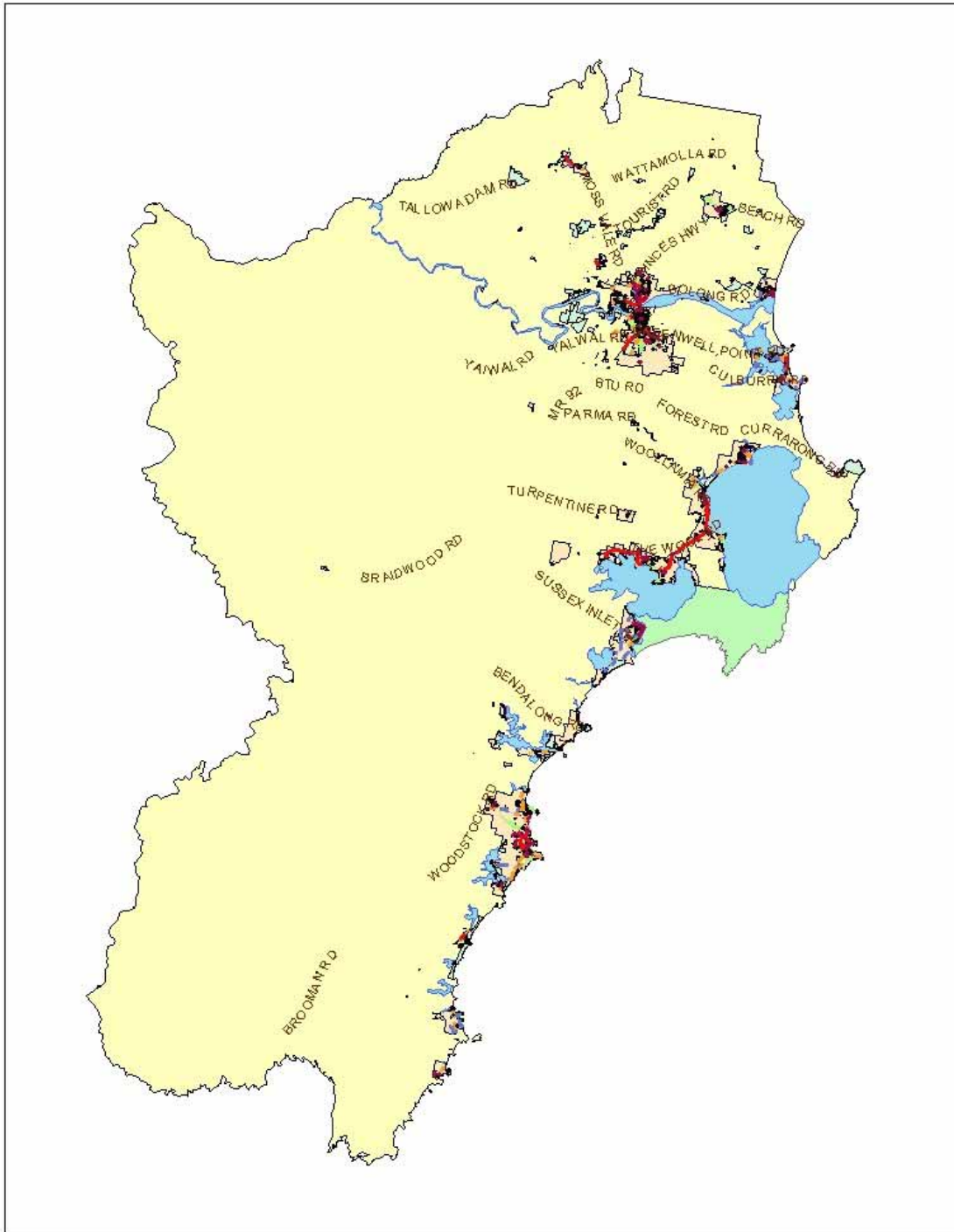
The services of Cycle Planning were engaged to assist with the preparation of Stage 2 of the Shoalhaven PAMP and review of the Shoalhaven Bicycle Strategy.

The existing PAMP Stage 1 was prepared for Council by consultants Sinclair Mertz Ltd and was adopted by Council in October 2001. The PAMP Stage 1 covers the City's major urban areas of Nowra / Bomaderry, Jervis Bay / St Georges Basin and Milton / Ulladulla.

PAMP Stage 1 looks at the pedestrian needs in the above three areas and presents a list of works required to improve pedestrian access and mobility. PAMP Stage 2 looks at the remaining urban areas of Shoalhaven City Council, these being: Sussex Inlet, Culburra/Orient Point, Shoalhaven Heads, Berry, Callala Bay, Lake Tabourie Area, Burrill Lake, Greenwell Point, Kioloa Area, Cudmirah/Berrara, Callala Beach, Bawley Point, Currarong, Manyana/Cunjarong, Cambewarra, Lake Conjola, Conjola Park, Kangaroo Valley, Kings Point, Fishermans Paradise, Dolphin Point, Bendalong, Woollamia, Tomerong, Myola, Hymans Beach and HMAS Albatross.

The study area includes the PAMP Stage 2 areas listed above for the PAMP recommendations and the entire local government area for the Bicycle Strategy. The study area is illustrated in Figure 1.

FIGURE 1 - STUDY AREA



0 2,400 4,800 9,600 14,400 19,200 Meters

Shoalhaven City

2. Study Tasks

The following tasks were undertaken as part of the preparation of PAMP Stage 2 and the Review of the Shoalhaven Bicycle Strategy:

1. The review of the Shoalhaven Bicycle Strategy and PAMP Stage 1 report.
2. The review of the Coastline Cycleway information.
3. The review of PAMP and Bicycle Strategy Comments collated by Council and undertaken during the community consultation prior to Cycle Planning being commissioned.
4. Site inspections of existing routes and proposed routes were undertaken to determine the location, extent and type of facilities. A total of three weeks was spent undertaking fieldwork in the study area (including walking and saddle surveys).
5. PAMP Scoring Criteria was developed with the steering committee and Council to assist with future implementation of the projects.
6. A spreadsheet was prepared outlining the existing facilities and proposed works for future implementation.
7. Maps of the existing and proposed routes were completed in electronic format.
8. A total of seven meetings with the steering committee and one presentation to Council took place during the project.
9. Council's recommendations for priorities and footpath programs were included in the implementation program.

2.1 Review of Shoalhaven PAMP Stage 1

The Shoalhaven PAMP Stage 1 was reviewed in order to assist with the preparation of Stage 2 PAMP. The areas covered in PAMP 1 are different to PAMP Stage 2 so most of the PAMP Stage 1 was not relevant to Stage 2 of the study. The relevant section of the PAMP that has been used to assist with preparing PAMP Stage 2 is Section 6 - Pedestrian Network. This section was used to assist with the issues that would need to be highlighted for the pedestrian network for PAMP Stage 2.

2.2 Review of the Shoalhaven Bicycle Strategy 1997

The Shoalhaven Bicycle Strategy was prepared in 1997 and this report updated the bicycle plan prepared in 1993. The Bicycle Strategy provides general information on planning for cyclists as well as identifying programs. The Bicycle Strategy identifies a spine network of cycleways for regional and longer distance commuter trips in order to create a number of routes that link bicycle generators with other land uses and local routes that link on from the spine to facilitate local trips such as school and local shopping trips. The routes proposed in the Bicycle Strategy that have not been implemented were identified as the future routes proposed for implementation and identified in the maps produced as part of this project.

2.3 NSW Coastline Cycleway Route

The NSW Government (DIPNR) has identified a coastline cycleway route that links the entire state of NSW along the coast. The vision is to connect by bicycle, the fast growing settlements along the NSW coast, most of which are less than 20km apart, – thereby providing a healthy, sustainable and accessible transport choice for local communities and eventually a long distance cycle route to attract tourists from interstate and overseas.

In the past, Shoalhaven City Council has received funding from DIPNR to provide cycleways along the coastal areas of Jervis Bay, Huskisson and St Georges Basin.

It is recommended that during the implementation of facilities along the coast and namely in the locations of Shoalhaven Heads, Huskisson, Vincentia, Old Erawal Bay, Basin View, St Georges Basin, Fishermans Paradise, Conjola Park, Milton, Mollymook, Ulladulla, Burrill Lake, Dolphin Point and Lake Tabourie, that funding be allocated from DIPNR's coastline cycleway implementation program to allow for the successful implementation of facilities.

2.4 Site Inspections of Existing and Proposed Routes

In order to provide a list of the existing pedestrian and bicycle routes and proposed pedestrian and bicycle routes in the study area, site inspections were completed to understand the location, extent and type of routes. A total of three weeks was spent undertaking the site inspections in the form of saddle surveys and walking surveys. The routes along the Princes Highway were surveyed on a bicycle and by car due to the high traffic volumes, heavy vehicles and high speeds making walking along this route hazardous. The routes are explained below and have been divided into existing routes and proposed routes.

Council provided maps of the existing and proposed routes and these were on the Shoalhaven Bicycle Strategy / PAMP Base maps. These maps were used during all the site inspections and the routes identified on the maps were used to check were facilities existed. A spreadsheet was completed based on the information collected during the site inspections identifying the locations of the existing facilities. The spreadsheet is attached as Appendix 1. The existing facilities in the study area have been mapped and the maps of each location are included as Appendix 2.

The proposed routes, projects and locations of existing facilities were inspected and verified by Council staff and 'Mapped' in Council's corporate GIS, ArcMap.

During the site inspections, the locations where future implementation of facilities are proposed has also been identified. The location of the facilities was based on the consultation undertaken by Council prior to the commencement of the project and the routes identified in the Shoalhaven Bicycle Strategy 1997.

The routes are divided into various types of facilities and these include:

- Proposed shared path
- Proposed on-road cycleway sign posted
- Proposed on-road cycleway with shoulder
- Proposed footpath
- Proposed crossing facilities
- Existing crossing facilities
- Existing footpath
- Existing shared path
- Existing on-road cycleway

The routes and facilities have been identified in the spreadsheet Appendix 1. An implementation strategy for the implementation of the proposed routes was devised based on the PAMP scoring criteria that was developed with Council. The development of the PAMP scoring criteria is discussed in Section 5 below. All the proposed routes were given scores based on the PAMP Scoring Criteria that included the feature of the route and the analysis of the type of facility recommended, the landuse the proposed facility passed by, the traffic speed along the proposed facility, The traffic volume, the likelihood of conflict with other vehicles, the accident history and the population of the route's location. By using the PAMP Scoring Criteria, each route has been given a score to assist with the implementation of facilities in the future.

The proposed routes and the score for each route are presented in the spreadsheet in Appendix 1. The proposed routes have been mapped and are illustrated in the maps in Appendix 2.

2.5 PAMP Scoring Criteria

Much information was made available to the consultant that identified the proposed routes for implementation in the future. The consultant met with Council's steering committee on a number of occasions to discuss the PAMP Scoring Criteria as the steering committee wanted to develop a set of criteria that would fairly assist with prioritising the facilities for all the locations. This was mainly because of the number of small villages in the study area and the fear that if the criteria was only population based then the facilities proposed for the small villages such as Berrara and Callala Beach would have a low priority

After much discussion, the PAMP Scoring Criteria was agreed upon that was thought to be fair to all the areas in the study and this is presented as Table 1 below and identifies seven features of each proposed route that carries a score. When all the scores are added together for each proposal then a final score for each route is given and this assists with the implementation for the future.

By looking at Table 1 it is evident that the following make up the scoring criteria.

- Type of Facility
- Landuse
- Traffic Speed
- Traffic Volume
- Conflict with Vehicles
- Accident History
- Population

Table 1

PAMP Scoring Criteria – From Works and Finance Committee Meeting 12th April 2005 Attachment A

PAMP Scoring Criteria

Type of Facility (one only)	Scores
a. Missing link	4
b. Extension of, or link to, existing facility	2
c. New facility	1
d. Additional points for shared facility	2
Landuse (indicator of demand / vulnerable users - add points together)	
Schools	4
Major CBD	4
Aged Self-care	4
Other education facility	3
Local commercial / retail area	3
Neighbourhood shopping centre	2
Recreation facility	2
Community facility	1
Corner store	1
Caravan park	1
Bus stop	1
Commuter route	1
Tourist use	1
Safety	
Traffic Speed (85 th %ile if known, otherwise speed limit)	
a. 80-99 km/h	3
b. 50-79 km/h	2
c. <50 km/h	1
d. No traffic	0
Traffic Volume	
a. 12,000 vpd and above	4
b. 8,000-11,999 vpd	3
c. 3,000-7,999 vpd	2
d. up to 2,999 vpd	1
Conflict with Vehicles (what most users do; one only)	
a. Always shares road space with traffic	4
b. Sometimes shares road space with traffic	2
c. Always use road shoulder	1
d. Never mix with traffic	0
Accident History (pedestrian and cyclist accidents only)	
a. 2 or more accidents	4
b. 1 accident	1
Population	
a. Major Urban Area - Nowra/Bomaderry	5
b. Secondary Area - Sanctuarry Point & Ulladulla/Mollymook/Mollymook Beach	4
c. Town - more than 2000 persons (Vincentia; Culburra/Orient Point; Sussex Inlet; Shoalhaven Heads)	3
d. Village - 1000 to 2000 persons (Basin View; St Georges Basin; Callala Bay; Berry; Cambewarra; Greenwell Point; Burrill Lake; Milton; Narrawallee; Huskisson; West Nowra; Worrigege)	2
e. Small village - less than 1000 persons (eg: Old Erawal Bay; Erawal Bay; Cadmirrah; Berrara; Callala Beach etc.)	1

2.6 Spreadsheet of the Existing and Proposed Routes for Implementation

The spreadsheet of the existing and proposed bicycle and pedestrian routes was developed with Council's assistance and is included as Appendix 1. The following information is contained in the columns of the spreadsheet:

Location of the facility– This is a summary of the street reference.

Urban Area– Names the village or town.

Treatment– A description of the proposed implementation measure is given. Eg install pedestrian refuge.

Type of Facility– a score is given in the table of 1,2 or 4 depending on the facility as described in the PAMP Scoring Criteria.

Landuse– A score of 1,2,3 or 4 is given depending on the landuse that the location passes as described in the PAMP Scoring Criteria.

Safety Total– This is a total score of the safety issues of speed, volume, conflict with vehicles and accident history.

Speed– A score of 0,1,2 or 3 is given depending on the known 85th percentile speed or speed limit as described in the PAMP Scoring Criteria.

Volumes– A score of 1,2,3 or 4 is given based on the traffic volumes as described in the PAMP Scoring Criteria.

Vehicle Conflict– A score of 0,1,2 or 4 is given based on what most users do i.e. Always shares road space with traffic, sometimes shares road space with traffic, always use road shoulder or never mixes with traffic.

Accident History– The pedestrian and cyclist accident history of the route is used to provide a score of 1 for 1 accident and a score of 4 for 2 or more accidents.

Population– A score between 1 and 5 is given based on the population of the location as detailed in the PAMP Scoring Criteria.

Priority Rating– This is a final score that is devised by adding the scores of the four columns Type of Facility, Landuse, Safety Total and Population. This score will be used to prioritise future implementation of facilities.

Issues– Issues deemed as important to implementation are included in point form. The issues include such subjects as improved pedestrian safety required.

Cost – This gives an approximate \$ (2004 year) value to implement the facility.

2.7 Maps of Study Area Illustrating Existing and Proposed Routes

A series of maps attached as Appendix 2, have been produced to illustrate the existing and proposed facilities for the PAMP and Bicycle Strategy. The routes and facilities are divided into existing and proposed facilities and further divided into the following:

- Proposed shared path
- Proposed on-road cycleway sign posted
- Proposed on-road cycleway with shoulder
- Proposed footpath
- Proposed crossing facilities
- Existing crossing facilities
- Existing footpath
- Existing shared path
- Existing on-road cycleway

2.8 Consultation

The Steering Committee met on seven occasions with the consultant during the study. The project manager was kept up to date with developments of the project by regular contact by e-mail and telephone. The project brief specified that community consultation would not be undertaken during the project to ascertain the views of the community about the proposed bicycle and pedestrian network and it is expected that the community consultation will take place during the exhibition of this report.

It should be noted, that some community consultation was undertaken by Council prior to the appointment of the consultant and this was in the form of the letter to the community included as Appendix 3. The comments made during the consultation were collated by Council and noted by the consultant.

2.9 The proposed PAMP Bicycle and Footpath 5 Year Capital Program

Council has reviewed the PAMP Scoring Criteria and an appropriate prioritised Capital Program and have now adopted a draft 5 Year Capital Program based on the prioritized project list determined by the Scoring Criteria.

An overview of Council's considerations of reports on the prioritization of projects is –

- September, 2004
 - Resolved to hold a briefing session and field inspections
- April, 2005
 - Resolved to hold a briefing session
- July, 2005
 - Resolved to hold a briefing session and resolved –
 - “Council adopts a 2 metre wide new footpath minimum policy, to replace 1.2 metre where it is physically feasible and there is a demonstrated cycle route demand and, in particular, where the PAMP identified an on road cycleway and a footpath.”
- September, 2005
 - Resolved to form a Councillor Working Party
- December, 2005
 - Adopted draft 5 Year Programs for Footpaths & Cycleways for public exhibition
 - Resolved to consider additional funding in annual Capital Programs

The adopted draft 5 Year Capital Programs are at Appendix 4 and it is to be noted that the forecast available capital funds are \$950,000 for Footpaths and \$1,100,000 for Cycleways. However, Council resolved to consider as part of the annual budget process to the provision of additional funds to undertake the draft 5 Year Programs within 3 years. This level of funding may not be available.

It is proposed to place PAMP 2 on public exhibition together with the draft 5 Year Capital Programs prior to formal adoption by Council. This is expected in 2006.

3. Conclusions

The Study has identified the existing facilities available for cycling and walking and a number of proposals for cycling and walking. It is expected that Council can implement the works in a prioritised manner based on the spreadsheet of proposals identified during the study and in accordance with the 5 Year Capital Works Program priorities.

APPENDICES

Appendix 1 – Spreadsheet of all identified projects

Appendix 2 - Maps of existing & proposed facilities

Appendix 3 - Letter for Preliminary Input

Appendix 4 – Draft 5 Year Bicycle & Footpath Capital Works Programs

CROSSINGS

Location	Urban Area	Treatment	Priority Rating	Issues	Other Programs
Intersection of Moss Street & Princes Highway	Nowra	Provide pedestrian crossings on all approaches to intersection	28	- Improve pedestrian safety (5 admitted injury accidents in the last 5 years where a pedestrian has been hit crossing or running across the Highway) - Impact on right-turn from Moss Street - Consider as part of Stocklands Development	Safety Around Schools
Princes Highway	Nowra	Block gap in pedestrian fence south of Moss Street	28	- Improve pedestrian safety (2 admitted injury accidents (children 12, 13) in the last 5 years where a pedestrian has been hit crossing the Highway to get to Brereton Street) - Is on pedestrian desire line to get to southern area of high school, may require signs to direct pedestrian to signalised crossing at nearby Moss Street intersection - Consider as part of Stocklands Development	Safety Around Schools
Princes Highway	Nowra	Block gap in pedestrian fence north of Junction Street	28	- Improve pedestrian safety - Is on pedestrian desire line to get to Nowra Fair, may require pedestrian fences on either side of the Highway to direct pedestrians to the signals at Worrigeer and Moss Streets - Consider as part of Stocklands Development	Safety Around Schools
North & Osborne Streets	Nowra	Improve ped safety opposite St Michael's Primary School (Nowra)	26	- On CBD ring route - Heavy traffic & speeding (perceived)	Safety Around Schools
Osborne St, Plunkett St, Berry St, Douglas St and Oliver Pde	Nowra	- Crossing facility projects associated with traffic calming measures for pedestrians in the vicinity of Nowra Public School. Investigate Childrens Crossing for Osborne & Douglas Streets	26	- LATMS required - Improve pedestrian safety in the vicinity of Nowra Public School	- LATMS - Safety Around Schools
Princes Highway	Milton	Pedestrian crossing facility improvements between Myrtle and Church Streets associated with Milton CBD Traffic Management Plan	26	Improve pedestrian safety between Myrtle & Church Streets. Possible zig zag lines on approaches to existing pedestrian crossings	- LATMS - Safety Around Schools
Bridge Road	Nowra	Install pedestrian refuge on Bridge Road, north of Keft Avenue	25	- Improve pedestrian safety (2 admitted injury accidents during the past 5 years)	
McMahons Road	North Nowra	Install pedestrian refuge and pram ramps east of Hansons Road	25	- Connect residents local road to shops - Connect shops to bus stop - Close proximity to existing refuge at roundabout	
Bolong Road	Bomaderry	Upgrade pedestrian refuge east of Meroo Road to make route from Station to Nowra CBD more seamless	23	- Connect residents local road to shops - Connect shops to bus stop - Close proximity to existing refuge at roundabout	
Illaroo Road	North Nowra	40m crossing of Pitt Street	22	Crossing of Illaroo Road in the vicinity of Pitt Street	Cycleways - Proposed SUP along Illaroo Rd
Collingwood Street	Basin View	Crossing facility to improve pedestrian/cyclist safety in the vicinity of the Basin View General Store	21	- Inspection required - Local Traffic Committee recommendation, Item 7 - 20 July 2004	
Emmett Street	Callala Bay	Request Childrens Crossing near Fire Station	21	- Provide safe crossing of Emmett St - Provide access to School, shops & sports ground	- Safety Around Schools - Footpaths
Old Southern Road	Worrigeer	Install pedestrian refuge at intersection with Greenwell Point Road	21	- Provide connection to new residential areas	Intersections - Roundabout
Princes Highway between Wason Street & Deering Street	Ulladulla	Install another pedestrian crossing point similar to those north of Wason Street where the cars have right-of-way over pedestrians	21	- Reduce haphazard crossing of relatively large numbers of pedestrians across busy road - Pedestrians cross at several locations - Embankment south of South Street excludes this location	
Yalwal Road	West Nowra	50m crossing of Yalwal Road	21	Safe Crossing point on Yalwal Road/Albatross Road	- Cycleways - Proposed SUP along Yalwal Rd - Safety Around Schools
Island Point Road	St Georges Basin	Install pedestrian refuges on all approaches to the proposed roundabouts on Tasman Street and Collett Place	20	- Improve pedestrian access and safety along this main through traffic route - Improve pedestrian facilities around shopping centre	Intersections - Roundabout
Parking off Boree Street	Ulladulla	Remove/rearrange parking to provide continuous pedestrian route from Princes Highway to supermarkets across the car park	20	- Reduce pedestrians having to weave between parked cars - Provide continuous pedestrian route between retail areas - Loss of small number of parking spaces	
Princes Highway	Burrill Lake	50m crossing of Dolphin Point Road	20	Safe crossing for pedestrians and cyclists	Cycleways - Proposed SUP along Dolphin Point Rd
Tomerong Street	Huskisson	Provide school crossing with blisters	20	Inadequate crossing facilities at northern gateway across Tomerong Street	Safety Around Schools
Intersection of Wallace Street & St Anne Street	East Nowra	Install splitter islands with cut-aways at roundabout	19	- Improved pedestrian safety - Provide facility for children to be taught how to use	- Nowra/Bomaderry Cycleway - Safety Around Schools

CROSSINGS

Location	Urban Area	Treatment	Priority Rating	Issues	Other Programs
Princes Highway	South Nowra	Reconstruct existing pedestrian refuge to standards south of Flinders Road	19	- Remove isolation of park on western side - Connect commercial premises on western and eastern sides of highway - Introducing something for vehicles to drive into, requires warning signs, chevrons and lighting	
Intersection of Kinghorne Street & Worrigee Street	Nowra	Install traffic signals with pedestrian phases	18	- Improved safety for pedestrians (especially the elderly)	Intersections - Signals
Old Southern Road	South Nowra	Kerb Blisters/childrens crossing/connecting footpath on curve north of Nowra Christain Community School	18	- Opposite Nowra Christan Community School. Internal issues to be addressed through DA conditioning - Last Count 030402	Safety Around Schools
Thomas Street	Sussex Inlet	Sussex Inlet Public School has no marked crossings. Consider K&G for parking control, blisters	18	Investigation required - Warrant & counts	Safety Around Schools
Boree Street	Ulladulla	Survey pedestrian volumes at both kerb build-outs, consider zebra crossings if warrants met	17	- Relatively low traffic volumes - Impede traffic flow	
Greenwell Point Road	Greenwell Point	Possible Childrens Crossing	17	- Inspection required - Lack of sight distance to the refuge on Greenwell Point Road - (RSO) this should be a flag crossing to be effective	- Safety Around Schools - Greenwell Point Plan of Management
Intersection of Jarvis Street & Journal Street	East Nowra	Install splitter islands with cut-aways at roundabout	17	- Improved safety of children crossing - Provide facility for children to be taught how to use	Safety Around Schools
Main Road	Cambewarra	Pedestrian facility to cross Main Road	17	Improve pedestrian safety at existing shared use path west of Rouse Av	Footpaths - Proposed along Main Rd
Paradise Beach Road	Sanctuary Point	Provide school crossing in front of school/possible traffic calming incorporated	17	- Cater for pedestrian movements on desire line for school children - Close proximity (approximately 200m) to existing refuge east of Kerry Street & existing blisters	Safety Around Schools
Shoalhaven Heads Rd	Shoalhaven Heads	Crossing at bowling club	17	- To link proposed paths on northern/southern sides of road	Cycleways - Proposed SUP along Shoalhaven Heads Rd
The Wool Road	Vincentia	Provide pedestrian refuge on western side of intersection with Beach Road	17	- Provide refuge to address existing safety concern for nearby schools and church, survey pedestriains at appropriate period after construction, consider marked zebra crossing is warrants met	Safety Around Schools
Golf Avenue	Mollymook	Provide pedestrian refuge (suggested location near intersections with Shackleton Street and Shepherd St)	16	- Provide crossing point across long street with footpath on one side and high surrounding landuse activity - Safety & visibility treatment on long straight road	
Park Row	Orient Point	Provide crossing close to Flora St	15		Cycleways - Proposed along Park Row
Yalwal Rd	West Nowra	Proposed shared path crossing Yalwal Rd west of Filter Rd	15	- Safe crossing facility between north/south sides along Yalwal Rd	- Cycleways - Proposed Along Yalwal Rd
Black Swan Way	Culburra	School flagged crossing of Black Swan Way, with K&G in same	14	- Opposite Culburra Public School - Last Count 040402	Safety Around Schools
Crooybar Road	Milton	Locate a crossing adjacent to Shoalhaven Anglican School, Milton on the western side of the school driveway	14	- Inspection/survey required	Safety Around Schools
Elizabeth Drive	Vincentia	Provide pedestrian refuges on all approaches to the proposed roundabouts at the intersections with Albion Street and Berry Street	13	- Improve pedestrian access across this main through route - Improve access between residential area and the coastal footpath	Intersections - Roundabout
Pitt St	North Nowra	Pitt Street crossing opposite Cane Cl	13	Safe crossing of Piit St opposite Cane Cl, in conjunction with shared path	Cycleways - Proposed along Pitt St & Cane Cl
Cambewarra Rd/Moss Vale Rd	Bomaderry	Blisters/Refuge.	0	- Lack of crossing facilities - Further investigation required. Consult Cambewarra School & bus operators (related to school buses?).	Safety Around Schools
Moss Vale Road	Kangaroo Valley	Provide bollards outside Kangaroo Valley Public School	0	- Inspection required - Blisters are located in a slight dip in the road near the school - very small children have difficulty seeing cars coming - SCHOOL BADLY POSITIONED on curve	Safety Around Schools
Moss Vale Road	Kangaroo Valley	Need for a 'children crossing' and associated 'school' sign on the right hand side of the road on the curve before Kangaroo Valley Public School	0	- Inspection required - Signs proliferating & lost in commercial material	Safety Around Schools
Vidler Street	Falls Creek	Lack of pedestrian facilities at Falls Creek Public School, possibly speed control devices	0	- Investigation required - School has not closed off ped. gate	Safety Around Schools
Queen Street (SH1)	Berry	Pedestrian Refuge & removal of nibes	0	Near the Shell Service Station. Supported by Local Traffic Committee on 16 Sept 03 & Council 23 Sept 03. Project No. 1404, File No. 2615	

CYCLEWAYS - CITYWIDE

Cycleways Project List

Priority Projects

1. To complete Cycleway routes identified in SCC Bicycle Strategy

Nowra/Bomaderry Cycleway
St Georges Basin to Sanctuary Point
Ulladulla/Burrill Lake Cycleway

Location	Urban Area	From	To	Works Required	Side	Length	Priority Rating	Issues and details	Other Programs
Princes Highway	Nowra	North Street	Moss Street	shared path	eastern	75	32	- Widen existing footpath	Nowra/Bomaderry Cycleway
Cambewarra Road	Bomaderry	Primary School	High School	shared path	Northern	612	31	Widen footpath on northern side from High School to Warby St and provide SUP from Primary School Children's Crossing to Brinawarr St	Nowra/Bomaderry Cycleway
Albatross Rd	West Nowra	(200m north) Flinders Rd	(200m south) Flinders Rd	shared path/signpost	East		30	- RTA Program 04/05 - On road parrallel to Albatross Rd with connecting off road and associated signage. Minor works at intersection to finalise route. Remaining timber bridge 'squeeze point' to be replaced within 2 years.	Nowra/Albatross Road Cycleway
Princes Highway	Nowra	Moss Street	Bridge Road	shared path	eastern	700	30	- Widen existing footpath	Nowra/Bomaderry Cycleway
Artie Smith Oval	Bomaderry	Bomaderry High School	Tarawal St & West Birriley St	shared path	Off road	400	28	Shared path through park	Nowra/Bomaderry Cycleway
Kalander Street	Nowra	Highway	Wallace Street	shared path	Northern	270	28	Shared path - Widening existing	- Nowra/Bomaderry Cycleway -
Paradise Beach Road	Sanctuary Point	Walmer Ave	Access Rd (60m north-east Kerry St)	shared path	Southern	200	28	Shared path - extension of existing one to Walmer Ave	St Georges Basin to Sanctuary Point Cycleway
Paradise Beach Road	Sanctuary Point	Access Rd (60m north-east Kerry St)	Access Rd (275m north-east Kerry St)	shared path	southern	210	28	Widen footpath to 2m (very tight)	St Georges Basin to Sanctuary Point Cycleway
Tarawal Street	Bomaderry	Ringbalin Crescent	Birriley Street	signpost	On road	407	28	Signpost road as a cycle route to connect with existing SUP north of Nita CI	Nowra/Bomaderry Cycleway
Brinawarr Street	Bomaderry	Beinda Street	Property No. 46	shared path	eastern	205	27	- Shared path - Provide continuous pedestrian path through residential area and bicycle route spine - Access to Nowra TAFE	Nowra/Bomaderry Cycleway
Princes Highway	Nowra	Shoalhaven River Bridge	Beinda St	shared path	Off road	390	27	- Improved access to Illaroo Rd Int from shared path linking eastern & western sides of the Princes Highway - Signage upgrade - Widen footpath between Illaroo Rd & Turley Av to shared path	Nowra/Bomaderry Cycleway

CYCLEWAYS - CITYWIDE

Location	Urban Area	From	To	Works Required	Side	Length	Priority Rating	Issues and details	Other Programs
Princes Highway	Nowra	Beinda St	Cambewarra Road	signpost	On road	2,250	27	- Signage upgrade between Illaroo Rd to Cambewarra Rd	Nowra/Bomaderry Cycleway
Douglas Street	East Nowra	Wallace Street	Journal Street	signpost	On road	200	26	- Signpost cyclist route	Nowra/Bomaderry Cycleway
Hillcrest Avenue	East Nowra	Princes Highway	John Purcell Way	shared path	Southern	350	26	- No path on either side - Provide access to High School and Playing fields	Nowra/Bomaderry Cycleway
Illaroo Road	North Nowra	Shopping Centre	Pitt Street	shoulders	On road	770	26	On road sealed shoulders	Safety Around Schools
Wallace Street	East Nowra	Kalandar Street	Douglas Street	signpost	On road	750	26	- Signpost cyclist route - Construct off road facilities at raised thresholds	- Nowra/Bomaderry Cycleway - Crossings
John Purcell Way	East Nowra	Park Road	Hillcrest Avenue	shared path	Eastern	400	25	- No footpath on either side - Provide access to High School and Playing fields	Nowra/Bomaderry Cycleway
Mitchell Parade	Mollymook	Donlan Rd (South)	Donlan Rd (North)	shared path	eastern (or on-road)	400	25	Interim safety measures prior to Shared path	
Mitchell Parade	Mollymook	Tallwood Avenue	Mollymook Creek	shared path	eastern	1,100	25	Shared path	
Princes Highway	Ulladulla	Racecourse Creek	Parson St	shared path	Western	1000	25	- Provide Shared Use Path - 100% RTA responsibility	Ulladulla/Burrill Lake Cycleway
Island Point Road	St Georges Basin	CBD Crossing Facility near Bruce St	Collett PI	shared path	Western	120	24	- Completion a chance in 04/05 if DIPNR funds permit - Completion of Basin View to St	St Georges Basin to Basin View Cycleway Route
North Street	Nowra	Princes Highway	Brereton Street	signpost	On road	130	24	- Signpost cyclist route	Nowra/Bomaderry Cycleway
Parson Street	Ulladulla	Princes Highway	St Vincent St	shared path	southern	200	24	- Provide Shared Use Path	Ulladulla/Burrill Lake Cycleway
Princes Highway	Burrill Lake	Racecourse Creek	Creek 275m North Cooper St	shared path	Western	1320	24	- Provide Shared Use Path - 100% RTA responsibility	Ulladulla/Burrill Lake Cycleway
Sanctuary Point Sports Ground	Sanctuary Point	Paradise Beach Rd Access (north)	Paradise Beach Rd Access (south)	signpost	On road	210	24	Provide Shared Traffic Area/Mixed Traffic Street	- St Georges Basin to Sanctuary Point Cycleway - Safety Around Schools
St Vincent Street	Ulladulla	Parson St	Ulladulla High School	shared path	Western	420	24	- Provide Shared Use Path	Ulladulla/Burrill Lake Cycleway
Beinda Street	Bomaderry	Nowra TAFE	Brinawarr Street	shared path	Northern	180	23	- No footpath on either side - Access to Nowra TAFE	Nowra/Bomaderry Cycleway
Brinawarr Street	Bomaderry	Tarawara St	Property No. 46	signpost	On road	160	23	-Signpost road as cyclist route - Bomaderry bicycle route spine - Link to Existing SUP at Bomaderry CBD - Access to Nowra TAFE	Nowra/Bomaderry Cycleway
Greenwell Point Road	East Nowra	Tarraba Cr	Worrigeer Road	shared path	southern	1,500	23		
Kalander Street	East Nowra	Stuart St	Secombe Street	shared path	Northern		23	Shared path	Safety Around Schools

CYCLEWAYS - CITYWIDE

Location	Urban Area	From	To	Works Required	Side	Length	Priority Rating	Issues and details	Other Programs
Park Road	East Nowra	John Purcell Way	Moresby St	shared path	southern	200	23	Shared Path	- Nowra/Bomaderry Cycleway Crossing of Park Rd E Moresby St
Pinces Highway	Burrill Lake	Cooper Street	Commonwealth Av	shared path	Western	515	23	- 100% RTA responsibility - Provide Shared path	Ulladulla/Burrill Lake Cycleway
Princes Highway	Burrill Lake	Creek 275m North Cooper St	Creek 275m North Cooper St	bridge	Western	10	23	- Provide 9.82m span bridge along Shared Use Path route - 100%RTA responsibility	Ulladulla/Burrill Lake Cycleway
Princes Highway	Burrill Lake	Cooper Street	Creek 275m North Cooper St	shared path	Western	275	23	- 100% RTA responsibility - Provide Shared path	Ulladulla/Burrill Lake Cycleway
Princes Highway	Ulladulla	Racecourse Creek	Racecourse Creek	bridge	Western	11	23	- Provide 10.9m span bridge along Shared Use Path route - 100% RTA responsibility	Ulladulla/Burrill Lake Cycleway
Queenborough Street	East Nowra	McKay Street	Stuart Street	shared path	Western	260	23	- Existing On road bicycle route - Missing footpath/SUP link	Nowra/Bomaderry Cycleway
Tarrawara Street	Bomaderry	Brinawarr Street	Meroo Street	signpost	on road	540	23	- Signpost road as cyclist route - Bomaderry bicycle route spine - Link to Existing SUP at Bomaderry CBD - Access to Nowra TAFE	Nowra/Bomaderry Cycleway
Cambewarra Road	Bomaderry	Meroo Road	Primary School	shared path	southern	270	22	Shared path	Nowra/Bomaderry Cycleway
Camden Street	Ulladulla	playing fields	bend near SES	shared path	Eastern	697	22	- No footpath on either side - Connect two planned shared paths	
Meroo Street	Bomaderry	Railway Station	Cambewarra Road	shared path	western	400	22	Widen footpath on western side to ped refuge & provide SUP on eastern side from ped refuge to Station	Nowra/Bomaderry Cycleway
River Rd	Sussex Inlet	Chris Creek		shared path on bridge	Eastern	25	22	Existing narrow bridge including approaches (70m + 35m)	Sussex Inlet Bicycle Route
Stuart Street	East Nowra	Kalander Street	Queenborough Street	shared path	Western	200	22	- Widen existing footpath - Existing On road bicycle Route	Nowra/Bomaderry Cycleway
Thomson St	Sussex Inlet	Sussex Inlet Primary School	SI Sporting Complex	shared path	Northern	100	22	shared path/K&G on northern side	Safety Around Schools
Berry Street	Nowra	Albatross Road	Plunkett Street	signpost	On road	1,100	21	Cycle lanes - both sides	
Green Street	Ulladulla	St.Vincents Street	Highway	shared path	northern	250	21	Shared path - extension of existing Green Street path	
Kalander Street	East Nowra	Seccombe Street	Service Road - east end	signpost	On road	500	21	Signpost road for use by cyclists	
Leonard St	Bomaderry	Lyndhurst Dr	Sampson Cres	signpost	on road		21		
McMahons Road	North Nowra	Shopping Centre	Judith Drive	shared path	Northern	600	21	Upgrade existing footpath to provide for shared use.	
McMahons Road	North Nowra	Judith Drive	Near Radio 2ST	shared path	Northern	450	21	Shared path	
Ulladulla Harbour	Ulladulla	North Head	Ulladulla Caravan Park	shared path	Off road	2,000	21	Shared path through harbour reserve via CBD	
Albatross Road	Nowra	Maclean Street	Kinghorne Street	signpost	On road	650	20	Cycle lanes - both sides	
Anson Street	Sanctuary Point	Kerry Street	St Georges Basin reserve	shared path	eastern	145	20	- Provide Shared Use Path	St Georges Basin to Sanctuary Point Cycleway
Camden Street	Ulladulla	bend near SES	South Street	shared path	Off road	1,000	20	Shared path	

CYCLEWAYS - CITYWIDE

Location	Urban Area	From	To	Works Required	Side	Length	Priority Rating	Issues and details	Other Programs
Emmett Street	Callala Bay	Callala Bay Public School	Sports Ground	Shared Path	Southern	120	20	- No path on either side - Provide access to School, shops & sports ground. To be funded 04/05 with K&G	- Safety Around Schools - Crossings
Emmett Street	Callala Bay	Sports Ground	Australia Av	shared path	Northern	185	20	- No path on either side - Provide access to School, shops & sports ground. To be funded 04/05	- Safety Around Schools - Crossings
Illaroo Road	North Nowra	Pitt Street	West Cambewarra Rd	shared path	Eastern	740	20	Shared path	- Crossing near Pitt St - Safety Around Schools
Nita Place	Bomaderry	Brinawarr Street	Ringbalin Crescent	signpost	On road	300	20	Signpost road as a cycle route to connect with existing SUP north of Nita CI	Nowra/Bomaderry Cycleway
Scenic Drive	Nowra	Bridge Road	North Street	signpost	On road	1,200	20	Signpost road for use by cyclists	
Sussex Inlet Sports Complex	Sussex Inlet	Existing SUP	Sussex Inlet Public School	shared path	Off road	65	20	Complete final SUP link, including Directional Signage (entire SI route) & pavement logos on-road SI route sections.	Sussex Inlet Bicycle Route
Tallwood Ave	Mollymook	Mitchell Parade	Carroll Ave	shared path	western	210	20	Shared path	
Thomson St	Sussex Inlet	The Springs Rd	Sussex Inlet Primary School	shoulders	On road	370	20		
Yalwal Rd	WEST NOWRA	ALBATROSS RD	DEPOT RD	Shared path	Southern	700	20		Crossing of Yalwal Rd near Albatross Rd
Carroll Avenue	Mollymook	Tallwood Avenue	Forest Way	shared path	southern	275	19	Shared path	
Elizabeth Dr	Vincentia	Moona Moona Ck Bridge		bridge	eastern		19	Widen existing footpath bridge (low priority)	Vincentia/Huskisson Cycleway
Lake Conjola Entrance Rd	Lake Conjola	Bowling Club	Lake Conjola Entrance Tourist Park	signage	On road	1,500	19	Signpost road for use by cyclists	
Moss Street	Nowra	Brereton Street	Ferry Lane	signpost	On Road	2,400	19	Signpost road for use by cyclists	
North Street	Berry	Prince Alfred St	Sports Centre	shared path		150	19	Investigate providing access from proposed footpath along SH1 in 05/06	
Princes Highway	Lake Tabourie	General Store	Intersection leading to Lake Tabourie Tourist Park over Tabourie Creek	shared path	Off road	1,700	19	Bridge component should be considered in conjunction 3611 //T2003/22	
Princes Highway	Lake Tabourie	Tabourie Creek		bridge	Off road	60	19	1700m SUP link along Princes Hwy also required 3611 //T2003/22	
Shoalhaven Heads Rd	Shoalhaven Heads	McIntosh St	Mathews St	shared path	northern	473	19		
Shoalhaven Heads Rd	Shoalhaven Heads	Explorer Bvd	Mathews St	shared path	northern	305	19	consultation (route through sports complex group)	
South Street	Ulladulla	Vigilant Street	High school	shared path	Northern	290	19	Shared path	
Vigilant St	Ulladulla	South Street	Morris St reserve	signpost	On road		19		
Warden Street	Ulladulla	Green Street	South Street	shared path	western	370	19	Shared path	
Wharf Road	Nowra	Riverview Road	Path under bridge	signpost	On road	160	19	Signpost road for use by cyclists	

CYCLEWAYS - CITYWIDE

Location	Urban Area	From	To	Works Required	Side	Length	Priority Rating	Issues and details	Other Programs
Anson Street	Sanctuary Point	Cammaray Dr	Kerry Street	signpost	On road	180	18	Signpost route for cyclists	St Georges Basin to Sanctuary Point Cycleway
Bolong Road	Bomaderry	Brinawarr Street	Highway	shared path	off road		18		
Cammaray Drive	Sanctuary Point	Claylands Dr	Anson St	signpost	On road	750	18	Provide SUP treatments at the intersections of Cammaray Drive with: 1. Anson St 2. Claylands Dr 3. Along access road into the Wool Lane Sporting Complex.	St Georges Basin to Sanctuary Point Cycleway
Claylands Drive	St.Georges Basin East	Durnford Pl	Cammaray Dr	signpost	On road	315	18	Signpost route for cyclists	St Georges Basin to Sanctuary Point Cycleway
Durnford Place	St.Georges Basin East	Reserve between 11 & 12 Durnford Pl	Claylands Dr	signpost	On road	250	18	Signpost route for cyclists	St Georges Basin to Sanctuary Point Cycleway
Foreshore link (including Sussex Rd & Edgewater Av)	Sussex Inlet	Lyons Rd	Pacificana Dr	shared path	Off road	1,000	18	Edgewater Ave (past Lakehaven & Christine Sts) & consultation	
Jacobs Drive	Sussex Inlet	Sussex Inlet Rd	Sussex House	shoulders	On road	1,700	18	onroad sealed shoulders on existing dirt	
Kalander Street	Nowra	Kinghorne Street	Highway	shared path	Northern	870	18	Shared path	
Murramarang Rd	Kioloa	Racecourse Beach touris park	Scerri Drive	shared path		3,000	18		
Princes Highway	Nowra	Bridge Road	Shoalhaven River Bridge	shared path	Off road	300	18	- Link beneath Shoalhaven River Bridge to eastern & western sides of the Princes Highway - Signage upgrade	Nowra/Bomaderry Cycleway
Public Wharf and Reserve	Greenwell Point	pool and reserve	North Boat Ramp	shared path	Off-road	140	18		Greenwell Point Plan of Managemnet
Seccombe Street	East Nowra	Lyrbird park	Kalander Street	signpost	On road	600	18	Signpost road for use by cyclists	
Woollamia Road	Huskisson	Industrial Estate	Huskisson Road	shared path	Eastern	748	18	Shared Path	
Yalwal Rd	WEST NOWRA	DEPOT RD	FILTER RD	Shared path	Southern	430	18		
Anson St	St.Georges Basin East	159 Anson St	Island Point Road	shared path	Northern	325	17	Developer to be conditioned to provide link. Link in private ownership	St Georges Basin to Sanctuary Point Cycleway
Bolong Road	Bomaderry	Meroo Street	Paper Mill	shoulders	on road	2,200	17	Sealed shoulders - both sides	
Castle Glem	North Nowra	Jamieson Road	Primary School	signpost	On road	300	17	Signpost road for use by cyclists	
Graham Street	Nowra	Bridge Road	McGrath Avenue	signpost	On road	270	17	Signpost road for use by cyclists	
Green Street	Ulladulla	Warden Street	TAFE	shared path	southern	420	17	widen to Shared path	
Jamieson Road	North Nowra	Castle Glen	Federation Place	signpost	On road	120	17	Signpost road for use by cyclists	
Kinghorne Street	Nowra	Kalander Street	St.Anns Street	shared path	eastern	280	17	Upgrade existing path for shared use	
Maybern Close	North Nowra	Illaroo Road	Farrar Drive	signpost	On road		17		
McGrath Ave	Nowra	Graham Street	end	signpost	On road	250	17	Signpost road for use by cyclists	

CYCLEWAYS - CITYWIDE

Location	Urban Area	From	To	Works Required	Side	Length	Priority Rating	Issues and details	Other Programs
Pitt Street	North Nowra	Nellore Place	Blue Gum Way	shared path	eastern	310	17	Shared path	Crossing of Pitt St opposite Cane Cl
Princes Highway	Milton	Catholic Primary School	Myrtle Street	shared path	Western	590	17	Shared path	
Sampson Cres	Bomaderry	Leonard St	reserve east side	signpost	on road		17		
Shoalhaven Heads Rd	Shoalhaven Heads	Shoalhaven Heads Bowling Club	Explorer Bvd	shared path	Northern	130	17	consultation	Crossing facility associated with project
Terara Road	Nowra	Ferry Lane	Milbank Road	signpost	On Road		17		
Village Drive	Ulladulla	Timbs Street	Green Street	signpost	On road	1,300	17	Sealed shoulders - both sides	Crossing facility across Princes Highway
Anson St	St.Georges Basin East	159 Anson St	Reserve between 11 & 12 Durnford Pl	shared path	Off road	115	16	Provide Shared Use Path 35m & 80m widening existing footpath	St Georges Basin to Sanctuary Point Cycleway
Bangalee link	North Nowra	Cocunut Drive	Burandool Ave	shared path	Off road	420	16	Shared path - involves crossing of the Regional Services Corr.	
Cavalier Pde reserve	Bomaderry	Cavalier Parade	Jasmine Drive	shared path	off road	360	16	Shared path	
Cavalier Pde reserve	Bomaderry	Wasdale Place	prop shared path	shared path	off Road	308 check	16	Mix of on and off road route	
Cavalier Pde reserve	Bomaderry	Sporting Complex	Shopping Centre	shared path	off road	240	16	Shared path	
Federation Place	North Nowra	Jamieson Road	end	signpost	on road		16		
Halcot estate link	North Nowra	Federation Place	Uranna Ave	shared path	Off road	210	16	Shared path through reserve - involves crossing of creek - many not be possible involves private land	
Jervis Street	Nowra	Wallace Street	Lyrbird Park	signpost	On road	240	16	Signpost road for use by cyclists	
Lumsden Road	North Nowra	Judith Drive	Cul de sac	signpost	On road	249	16	Signpost road for use by cyclists	
McDonald Avenue	Burrill Lake	Queanbeyan Av	Existing footpath	shared path	Western	160	16	- Provide SUP To connect with Existing footpath	Ulladulla/Burrill Lake Cycleway
Narang Road	Bomaderry	Princes Hwy	Tennis Court	shared path	northern	400	16	Shared path	
Owen Street	Huskisson	Sydney Street	Hawke Street	signpost	On road	390	16	Signpost road for use by cyclists	
Princes Highway	Burrill Lake	Burrill Lake Bridge	Wallaroy Dr	shared path	Northern	460	16	Shared path	Ulladulla/Burrill Lake Cycleway
Princes Highway	Ulladulla	Village Drive	St.Vincent's Street	shoulders	On road	1,000	16	Sealed shoulders - both sides	
Shoalhaven Sporting Complex	Bomaderry	Sporting Complex	Cavalier Parade	shared path	off road	600	16	Shared path	
St Georges Basin Reserve	Sanctuary Point	Anson St	Paradise Beach Road	shared path	Off road	1450	16	- Provide Shared Use Path	St Georges Basin to Sanctuary Point Cycleway
The Springs Rd	Swanhaven	Thomson St	Hoffman Dr	shoulders		1,320	16	Ward 3 Mtg 13 May 2004	
West Street Oval	Nowra	Worrigeer Street	Bice Road	shared path	Off road	1,300	16	Shared path through public reserve - included creek crossing.	
Crawford Drive	North Nowra	Judith Drive	Lumsden Road	signpost	On road	380	15	Signpost road for use by cyclists (Why?)	
Crest Avenue	North Nowra	Illaroo Road	Yurunga Drive	signpost	On road	260	15	Signpost road for use by cyclists	
David Cl/Lyndhurst Dr	Bomaderry	cul-de-sac	Yeovil Drive	signpost	On road	187	15	Signpost road for use by cyclists	
Dolphin Point Road	Burrill Lake	Princes Highway	Seaside Parade	shared path	Eastern	860	15	Shared path & safe highway crossing	Crossing facility across Princes Highway

CYCLEWAYS - CITYWIDE

Location	Urban Area	From	To	Works Required	Side	Length	Priority Rating	Issues and details	Other Programs
East St to Cox Ave	Nowra	Kalandar Street	Douglas Street	signpost	On road	930	15	Signpost road for use by cyclists	
Ferry Lane	Nowra	Riverview Road	Terara Road	signpost	On road	530	15	Signpost road for use by cyclists	
George Evans Road	Nowra	Yalwal Road	University Campus	shared path	eastern	700	15	Shared path	
Goolagong Street	North Nowra	Judith Drive	Drexel Park Reserve	signpost	On road	250	15	Signpost road for use by cyclists	
Hawthorn Avenue	Nowra	Pleasant Way	Riverview Road	signpost	On road		15	(Not necessary if SUP links Shoalhaven River Bridge to Riverview Rd)	
Walmer Avenue	Sanctuary Point	Paradise Beach Road	Milson Street	signpost	On road	1,100	15	Signpost road for use by cyclists	
Milson Street	Sanctuary Point	Greville Ave	Walmer Av	signpost	On road	100	15	Signpost road for use by cyclists	
Morris Street	Ulladulla	Warden Street	bend	signpost	On road	650	15	Mix of signposted road and short path through linking reserve.	
Moss Vale Rd	Kangaroo Valley	Osbourne Park	Nugents Creek Rd	shared path		1,100	15	in bike plan	Kangaroo Valley Cycleway Route
Murramarang Rd	Bawley Point	Loriket Cl	General Store (near Thrush St)	shared path		376	15	2m wide path, linemark and logo	
North Street	Nowra	Scenic Drive	Catholic Primary School	signpost	On road	450	15	Signpost road for use by cyclists	
Peak Ave	North Nowra	Yurunga Drive	Hansons Road	signpost	On road	550	15	Signpost road for use by cyclists	
Pleasant Way	Nowra	Hawthorn Avenue	Highway	signpost	On road	280	15	Signpost road for use by cyclists	
Sanctuary Point Road	Sanctuary Point	Paradise Beach Road	Greville Ave	signpost	On road	2,000	15	Signpost road for use by cyclists	
Sharman park	North Nowra	Lumsden Road	Shopping Centre	shared path	Off road	240	15	Upgrade existing path through northern part of park	
Shoalhaven Heads Rd	Shoalhaven Heads	Bolong Rd	Shoalhaven Heads Bowling Club	shared path	Southern	680	15		Crossing facility associated with project
Yeovil Drive	Bomaderry	Lyndhurst Drive	Meroo Rd pathway	signpost	On road	406	15	Signpost road for use by cyclists	
Yurunga Drive	North Nowra	Gleneagle Parade	Western end of Yurunga	signpost	On road	330	15	Signpost road for use by cyclists	
Yurunga Drive (not constructed)	North Nowra	Existing west end	eastern end - River Ridge	signpost	On road	310	15	Signpost road for use by cyclists - cannot be implemented until development occurs	
Boag Street	Mollymook	Public Reserve (near Hwy)	Davies Street	signpost	On road	480	14	Signpost road for use by cyclists	
Bunberra Street	Bomaderry	Robey Street	West Bunberra Street	signpost	on road	596	14	Signpost road for use by cyclists	
Burrill Street	Huskisson	Jervis Street	Moona Creek Bridge	shared path	Eastern	370	14	Shared path	
Callala Bay Rd	Callala Bay	Emmett St	Town limit	shoulders	On road	929	14	consultation	
Commonwealth Street	Burrill Lake	Princess Av	Queanbeyan Av	signpost	On road	85	14	Provide on road cycle route	Ulladulla/Burrill Lake Cycleway
Croobyar Road	Milton	Princes Highway	Wilfords Lane	shared path	Southern	484	14	Shared path	
Elizabeth Drive	Vincentia	Burton Street	Jervis Street	shared path	Southern	1,700	14	Shared path	
Garside Road	Mollymook	Matron Porter Drive	eastern edge of School site	shared path	Northern	450	14	Shared path	

CYCLEWAYS - CITYWIDE

Location	Urban Area	From	To	Works Required	Side	Length	Priority Rating	Issues and details	Other Programs
Greville Ave	Sanctuary Point	Sanctuary Point Road	Milson Street	signpost	On road	1,700	14	Signpost road for use by cyclists	
Jerry Bailey Rd	Shoalhaven Heads	Hay Ave	Shoalhaven Rd	signpost		1,100	14	signpost route on road. 10logos 6 signs line 2	
Mahogany Creek Res	North Nowra	Farrar Drive	Judith Drive	shared path	Off road	240	14	Signpost road for use by cyclists	
Marriott Park	Nowra	Douglas Street	Plunkett Street	shared path	Off road	150	14	Shared path through park	
McDonald Avenue	Nowra	Albatross Road	End of Ave	signpost	On road	520	14	Signpost road for use by cyclists	
Morris Street Park	Ulladulla	Morris Street	Vigilant St	shared path	Off-road	267	14	- Connect two planned shared paths	
Murre St	Sussex Inlet	Avocet	Sussex Inlet Rd	signpost	On road	290	14	2logos, 2 signs, lines*2	
Princes Highway	Dolphin Point	Wallaroy Drive	turn off to Lake Tabourie Tourist Park existing bridge over Tabourie Creek	shoulders		2,000	14	consultation	Lake Tabourie/Burrill Lake
Princes Highway	Milton	Croobyar Road	Village Drive	shared path	Southern	3,790	14	- No footpath on either side - Link all three towns - Shared path similar to Huskisson to Vincentia path - Create recreational activity - Increase accessibility/mobility for young people	
Queanbeyan Avenue	Burrill Lake	Commonwealth St	McDonald Pde	signpost	On road	275	14	Provide on road cycle route	Ulladulla/Burrill Lake Cycleway
Ritchie St	Bomaderry	Sampson Cres	Leonard St	signpost	on road		14		
Shanklin Close pathway	Bomaderry	Shanklin Close	Shopping Centre	shared path	off road	264	14	Shared path	
South Street	Ulladulla	Did Dell Street	Highway	signpost	On road	450	14	Signpost road for use by cyclists	
Surf Club reserve	Mollymook	Mollymook Creek	Surf Club	shared path	Off road	430	14	Shared Path	
Wallace Street	Mollymook	Davies Street	Golf Avenue	signpost	On road	290	14	Signpost road for use by cyclists	
West Bunberra Street	Bomaderry	Princes Highway	Bunberra Street	signpost	on road		14		
Yalwal Rd	WEST NOWRA	FILTER RD	George Evans Road	Shared path	Northern	750	14	Difficulty constructing bridge approaches	Crossing of Yalwal Rd near Filter Rd
Shanklin Close	Bomaderry	Lyndhurst Dr	end	signpost	on road		13		
Albatross Road	HMAS Albatross	Braidwood Rd	existing shoulders	shoulders	Western	400	13	extend shoulders on western side of Albatross Rd	
Bannister Head Road	Mollymook	Matron Porter Drive	Tallwood Avenue	signpost	On road	1,500	13	Signpost road for use by cyclists	
Binden Cl	Bomaderry	Monk Cr	end	signpost	on road		13		
Cane Close	North Nowra	Golden Cane Ave	end	signpost	on road	120	13	Shared path - involves safe crossing of Pitt street	Crossing of Pitt St opposite
Clarke Ave/Ambassador Ave	North Nowra	Hansons Road	Gleneagle Parade	signpost	On road	310	13	Signpost road for use by cyclists	
Cocus Palm Drive	Bomaderry	Jasmine Drive	Public Reserve	signpost	On road	200	13	Signpost road for use by cyclists	
Coral Crescent	Ulladulla	Pitman Avenue	Dowling Street	signpost	On road	700	13	Signpost road for use by cyclists	
Dalwah Street	Bomaderry	Tarawara Street	Birriley Street	signpost	on road	465	13	Signpost road for use by cyclists	
Did Dell Street	Ulladulla	Powall Ave	South Street	signpost	On road	690	13	Signpost road for use by cyclists	
Forest Way/Oxley Cr	Mollymook	Treetops Cr(E)	Robin Place	shared path	Northern	670	13	Shared path	

CYCLEWAYS - CITYWIDE

Location	Urban Area	From	To	Works Required	Side	Length	Priority Rating	Issues and details	Other Programs
Gleneagle Parade	North Nowra	Ambassador Ave	Yarunga Drive	signpost	On road	270	13	Signpost road for use by cyclists	
Golden Cane Ave	North Nowra	Cane Close	bend	signpost	On road	285	13	Signpost road for use by cyclists	
Graham Street	Milton	Church Street	Gordon Street	signpost	On road	264	13	Signpost road for use by cyclists	
Harry Sawkins Park	Nowra	McGrath ave	Highway	shared path	Off road		13		
Jamieson Rd reserve	North Nowra	Federation Place	Ilaroo Road Roundabout	shared path	Off road	80	13	Upgrade existing gravel path to provide for shared use.	
Judith Drive	North Nowra	Lumsden Road	NN Primary School	signpost	On road	230	13	Signpost road for use by cyclists	
Karowa Street	Bomaderry	Birriley Street	Primary School	signpost	On road	196	13	Signpost road for use by cyclists	
Link Thomson St to Lakehaven Dr	Sussex Inlet	Thomson St	Lakehaven St	shared path	Off road	340	13	consultation	
Matron Porter Drive	Mollymook	Bangalow Street	Leo Drive	shared path	eastern	1,300	13	Shared path	
Monk Cres	Bomaderry	Binden Cl	Penrose Dr	signpost	on road		13		
Murramarang Rd	Bawley Point	General Store	Voyager Cres Shopping Centre	shared path		1,600	13	2m wide path, linemark and logo	
Nellore Place	North Nowra	Pitt Street	Cul-de-sac	signpost	On road	100	13	Signpost road for use by cyclists - short path through reserve to school	
Park Street/Watt Street	Huskisson	Tomerong Road	Tomerong Road	signpost	On road	404	13	Signpost road for use by cyclists	
Penrose Dr	Bomaderry	Monk Cr	Meroo Rd	signpost	on road		13		
Phillip Drive	North Nowra	Public reserve	Castle Glen	signpost	On road	180	13	Signpost road for use by cyclists	
River Rd	Shoalhaven Heads	Shoalhaven Tourist Park	Jerry Bailey Rd	signpost		1,050	13	consultation	
Rotary Park	Ulladulla	Crescent Street	Highway	shared path	Off road	300	13	Shared path through harbour reserve	
Shoalhaven River Bridge	Nowra	North end east side	North end west side	shared path	Off road	50	13	Upgrade existing shared path under bridge	
Shoalhaven Sporting Complex	Bomaderry	Cambewarra Road	end of access road	signpost	On road	250	13	Signpost road for use by cyclists	
St.Anns Street	East Nowra	Berry Street	Kinghome Street	signpost	On road	210	13	Signpost road for use by cyclists	
Thurgate Oval	Bomaderry	Bolong Road	Tarrawara Street	shared path	off road	400	13	Shared Path	
Wason Street	Milton	Thomas Street	Primary School	shared path	Eastern	60	13	Shared Path	
Shanklin Close pathway	Bomaderry	High School	Shanklin Close	shared path	off road		12		
Burrill Street	Ulladulla	South Street	Wason Street	signpost	On road	250	12	Signpost road for use by cyclists	
Canal St East	Culburra Beach	Prince St	Brighton St	signpost		200	12	2 logos, 2 signs, lines*2	
Cane Close pathway	North Nowra	Cane Close	Pitt Street	shared path	Off road		12		
Coconut Drive pathway	North Nowra	Golden Cane Ave	Cocunut Drive	shared path	Off road	70	12	Upgrade existing path for shared use	
Duncan Street	Huskisson	Bowen Street	Jervis Street	signpost	On road	677	12	Signpost road for use by cyclists	
Gordon Cook Apex Park	North Nowra	Cocunut Drive	Chittick Ave	shared path	Off road	150	12	Shared path through reserve	
Greenwell Point Road	Greenwell Point	town limits	Wilkins St	signpost		1,100	12	6 logos, 4 signs and lines*2	
Kings Point Drive	Kings Point	Princes Highway	Oakley Place	signpost	On road	2,100	12	Signpost road for use by cyclists	
Leonard St	Bomaderry	Ritchie St	Meroo Rd	signpost	on road		12		
Maleen St link	Bomaderry	Beinda Street	Maleen Street	shared path	off road	180	12	Shared path - future subdivision?	
Mandalay/Collier Ave	Nowra	Scenic Drive	North Street	signpost	On road	580	12	Signpost road for use by cyclists	

CYCLEWAYS - CITYWIDE

Location	Urban Area	From	To	Works Required	Side	Length	Priority Rating	Issues and details	Other Programs
Matron Porter Drive	Milton	Princes Highway	Garside Road	shoulders	On road	1,700	12	Sealed Shoulders	- Safety Around Schools - Footpaths
Matron Porter Drive	Mollymook	Macleay Street	Bangalow Street	signpost	On road	720	12	Signpost road for use by cyclists	
Milbank Road	Terara	Terara Road	Primary School	signpost	On road	230	12	Signpost road for use by cyclists	Safety Around Schools
Monk Cres pathway	Bomaderry	Lyndhurst Dr	Binden Cl	shared path	off road		12		
Nellore Place reserve	North Nowra	Nellore Place	school	shared path	Off road		12		
New Street	Ulladulla	Did Dell Street	end	signpost	On road	4,300	12	Signpost road for use by cyclists	
Penguin Head Rd	Culburra Beach	Duke St	Eastwood Ave	shared path		1,500	12		
Riverview Road	Nowra	Hawthorn Avenue	Ferry Lane	signpost	On road	660	12	Signpost road for use by cyclists	
Sampson Cres pathway	Bomaderry	Sampson Cres East	Primary School	shared path	Off road	170	12	Shared path	
Sampson Cres reserve	Bomaderry	Sampson Cres west	Ritchie St	shared path	off road		12		
Sampson Cres reserve	Bomaderry	Sampson Cres west	Sampson Cres east	shared path	off road		12		
Shoalhaven Sporting Complex	Bomaderry	Sporting Complex	Fuschia Cres - south	shared path	off road	100	12	Shared path	
Shoalhaven Sporting Complex	Bomaderry	Sporting Complex	Fuschia Cres - north	shared path	Off road	100	12	Shared path	
The Wool Lane reserve	Sanctuary Point	Cammaray Dr	Ball Cl	shared path	Off road	200	12	- Provide Shared Use Path to connect to St Georges Bain to Sanctuary Point Cycleway and link proposed footpath network	
Thomas Street	Milton	Princes Highway	Church Street	signpost	On road	293	12	Signpost road for use by cyclists	
Walsh Cres/Phillip Pl Reserve	North Nowra	Walsh Cres	Phillip Place	shared path	Off road	95	12	Shared path through reserve	
Clyde Street	Mollymook	Augusta Place	Mitchell parade	signpost	On road	730	11	Signpost road for use by cyclists	
Croobyar Road	Milton	Wilfords Lane	Showground	shared path	Southern	475	11	Shared path	
Drexel Park	North Nowra	Goolagong Street	Existing path behind Glenhaven etc	shared path	Off road	170	11	Shared path through reserve to link to exiting path	
Drexel Park	North Nowra	End of existing path	Geary Place	shared path	Off road	160	11	Shared path through reserve to link to exiting path	
Drexel Park	North Nowra	End of existing path	Conisten Close	shared path	Off road	170	11	Shared path through reserve to link to exiting path	
Fairway Dr to The Park Dr	Sanctuary Point	Pathway to Sanctuary Point Oval	Stephens Rd	signpost	On road		11		
Farrant Ave	Culburra Beach	all	all	signpost		178	11	2logos, 2 signs, lines*2	
Garside Road	Mollymook	Matron Porter Drive	reserve near no 57	shared path	Southern	730	11	Shared path	
Greenbank Grove	Culburra Beach	Prince Edward	Lake CCt	signpost		950	11	10 logos, 5 signs, lines*2	
Greens Rd	Greenwell Point	Leonore Ave	Crookhaven Dr	signpost		720	11	4 logos, 2 signs, lines*2	
Jervis Street	Greenwell Point	Greenwell Point Road	South Street	signpost		135	11	2 logos, 2 signs, lines*2	
MacGibbon/McGowen Parade	Old Erowal Bay	The Wool Road	Page Street	signpost	On road	1,100	11	Signpost road for use by cyclists	

CYCLEWAYS - CITYWIDE

Location	Urban Area	From	To	Works Required	Side	Length	Priority Rating	Issues and details	Other Programs
Macleay Street	Mollymook	Leo Drive	Matron Porter Drive	signpost	On road	400	11	Signpost road for use by cyclists	
Maleen St link	Bomaderry	Beinda St link	Tarawal Street	shared path	off road	140	11	Shared path - future subdivision?	
Matron Porter Drive	Mollymook	Garside Road	Leo Drive	shoulders	On road	717	11	Sealed shoulders	
Naval Parade/Wrights Beach Rd	Erowal Bay	Naval Parade	Wrights Beach Road	shoulders	On road	3,000	11	Sealed shoulders - both sides	
Nowra Showground	Nowra	North Street	Worrigeer Street	shared path	Off road	500	11	Shared path through Showground	
Pacificana Drive	Sussex Inlet	Edgewater	Surf Club	signpost	On road	1,800	11	consultation	
Racecourse Creek	Ulladulla	Sports Complex	Highway	shared path	Off road	500	11	Shared path adjacent to creek	
Sussex Inlet Rd	Sussex Inlet	Turnoff from Princess Hwy	Jacobs Drive	shoulders	On road	11,000	11	on road sealed shoulders on existing dirt	
Walsh Cres	North Nowra	Illaroo Road	Public Reserve	signpost	On road	640	11	Signpost road for use by cyclists	
Yurunga Drive	North Nowra	eastern end - River Ridge	Murrell Place	signpost	On road	590	11	Signpost road for use by cyclists	
Addison Rd	Culburra Beach	all	all	signpost		1,100	10	consultation	
Balmoral road	Burrill Lake	Princes Highway	Maria Avenue	signpost	On road	210	10	Signpost road for use by cyclists	
Bangalow Street	Mollymook	Macleay Street	Matron Porter Drive	signpost	On road	640	10	Signpost road for use by cyclists	
Bolong Road	Shoalhaven Heads	Alexander Berry Drive	Shoalhaven Heads Rd	shoulders		1,200	10	consultation	
Bolong Road	Shoalhaven Heads	Shoalhaven Heads Rd	Gerroa Rd	shared path		1,500	10	consultation	
Burandool Ave	North Nowra	Moondara Drive	end	signpost	On road	465	10	Signpost road for use by cyclists	
Burril Street North	Ulladulla	Nurrawallee Street	Crescent Street	signpost	On road	400	10	Signpost road for use by cyclists	
Deering St oval	Ulladulla	New Street	Deering Street	shared path	Off road		10		
Dent Street	Huskisson	Tomerong Road	Creek	signpost	On road	245	10	Signpost road for use by cyclists	
drexel park	North Nowra	Goolagong Street	Garlin Close	shared path	Off road	70	10	Shared path through reserve	
Fairlands Rd	Culburra Beach	all	all	signpost		370	10	4logos,2signs,lines*2	
Forest Rd	Kioloa	Pretty Beach Rd	Murramarang	shared path		370	10	consultation	
Forest Way	Mollymook	Treetops Cr	Garside Road	signpost	On road	100	10	Signpost road for use by cyclists	
Garlin Close reserve	North Nowra	Garlin Cl	Goolagong Street	shared path	Off road		10		
Gordon Street	Milton	Graham Street	Princes Highway	signpost	On road	169	10	Signpost road for use by cyclists	
Greenwell Point Road	Greenwell Point	Wilkins St	Adelaide Ave	signpost		170	10	2logos, 2 signs, lines*2	
Lackersteen St	Callala Bay	Bay (footbridge)	Emmett St	shared path	Eastern	950	10	consultation	
Leo Drive	Mollymook	Matron Porter Drive	Macleay Street	signpost	On road	1,730	10	Signpost road for use by cyclists	
Murramarang Rd	Bawley Point	Shopping Centre at Voyager Cres	Racecourse beach tourist park	shared path		1,900	10	2m wide linemark and logos	
Myola Rd	Myola	Beach St	Princess St	shoulders		1,600	10	consultation	
Nielson Rd/Ln	Sussex Inlet	Banksia St	boat ramp	signpost	On road	250	10	2logos, 2 signs, lines*2	
Old Erowal Bay link	Erowal Bay	McGowen Parade	Naval Parade	shared path	Off road	600	10	Shared path - crossing of Worroving Creek involved	
Paradise and Lagoon Cres link	Sussex Inlet	Jacobs Drive	River Road	shared path/sign post	off/on road	480	10	signpost on road and link off road with shared use path. 6logos,4signs,line*2	

CYCLEWAYS - CITYWIDE

Location	Urban Area	From	To	Works Required	Side	Length	Priority Rating	Issues and details	Other Programs
Park Row	Orient Point	Flora St	Orient Point Playing Fields	shared path		450	10	consultation	Crossing of Park Row
Parson Street	Ulladulla	Did Dell Street	Woorree Pl	signpost	On road	230	10	Signpost road for use by cyclists	
Plantation Point Parade	Vincentia	Elizabeth Drive	Jervis Street	signpost	On road	950	10	Signpost road for use by cyclists	
Rennies Beach Cl	Ulladulla	Did Dell Street	Lookout	signpost	On road	230	10	Signpost road for use by cyclists	
Sanctuary Point Oval	Sanctuary Point	Sanctuary Point Road	Fairway Drive	shared path	Off road	180	10	Shared path through sports complex	
Silvermere St	Culburra Beach	all	all	signpost		1,000	10	10logos,5signs,line*2	
South Street	Greenwell Point	Jervis St	Haiser Rd	signpost		91	10	2logos, 2 signs, lines*2	
Stephens Rd-Carmel Dr	Sanctuary Point	The Park Dr	Vost Drive	signpost	On road	1,300	10	Signpost road for use by cyclists	
Sussex Inlet Rd	Sussex Inlet	Murre	Jacobs	shoulders	On road	280	10		
The Lake CCT	Culburra Beach	Eastbourne	Silvermere	signpost		1,000	10	10logos,5signs,line*2	
The Springs Rd	Swanhaven	Hoffman Dr	SLWSC Ramp	shoulders		1,500	10	Ward 3 Mtg 13 May 2004	
Treetops Cr	Mollymook	Forest Way	Forest Way	signpost	On road	410	10	Signpost road for use by cyclists	
Wallaroy Parade	Burrill Lake	Princes Highway	Wyoming Ave	signpost	On road	160	10	Signpost road for use by cyclists	
Warden Head	Ulladulla	New Street	end of Deering Street	shared path	Off road	1,800	10	Off road shared path through Warden Head Reserve	
Whistler Ave	Culburra Beach	Addison	Prince Edward	signpost		181	10	consultation	
Boatharbour Drive	Sussex Inlet	Greentree Ave	Pacificana Dr	signpost	On road	300	9	consultation	
Brighton	Culburra Beach	Canal St	Edward Ave	signpost		726	9	6logos,4signs,line*2	
Buchan Street	Mollymook	Golf Ave	Murramarang Stree	signpost	On road	375	9	Signpost road for use by cyclists	
Cammaray Dr Reserve	St.Georges Basin East	Loralyn Ave	Tilbrook Ave	shared path	Off road	580	9	Shared path	
Chittick Ave	North Nowra	Illaroo Road	Illaroo Road	signpost	On road	520	9	Signpost road for use by cyclists	
Coolangatta Rd	Shoalhaven Heads	Bolong Rd	Berry (town Centre)	shoulders		8,000	9	consultation	
Coralie Close	North Nowra	Coralie Close	llaroo Road	signpost	On road	700	9	Signpost road for use by cyclists - Coralie Close, Warren Ave & Halcot Ave	
Cullen Rd	Kangaroo Valley	all	all	signpost		280	9	4logos,2signs,lines*2	
Derwent	Callala Bay	all	all	signpost	On road	283	9	consultation	
Duke St	Culburra Beach	Farrant	Lake Circuit Head Rd	signpost		150	9	2logos, 2 signs, lines*2	
Eastbourne Ave	Culburra Beach	all	all	signpost		724	9	6logos,4signs,line*2	
Emmett Street	Callala Bay	Lackerstein	Australia Av	signpost	On road		9	consultation	
Explorer Blv	Shoalhaven Heads	Scott St	Shoalhaven Heads Rd	Shared path	Eastern	260	9	consultation	
Farrelly Place reserve	Bomaderry	Farrelly Place	Melaleuca Place	shared path	Off road	90	9	Shared path	
Garlin Close	North Nowra	Pitt Street	Cul de sac	signpost	on road	140	9	Signpost road for use by cyclists	
Hoskins Street	North Nowra	Yarunga Drive	Lucas Street	signpost	On road	16	9	Signpost road for use by cyclists	
Jervis Street	Huskisson	Duncan Street	Burrill Street	shared path	Southern	115	9	Shared path	
Link Boatharbour Drive to The Springs Rd	Sussex Inlet	The Springs Rd	Boatharbour Drive	Shared path	Off road	340	9	consultation	
Mathews St (in sporting complex)	Shoalhaven Heads	E side of sporting complex from Shoalhaven Rd	link Tennis Club	Shared path	Off road	290	9	consultation	

CYCLEWAYS - CITYWIDE

Location	Urban Area	From	To	Works Required	Side	Length	Priority Rating	Issues and details	Other Programs
McIntosh St	Shoalhaven Heads	Shoalhaven Heads Rd	Surf Club northern footpath	Shared path		170	9	consultation	
Moondara Drive	North Nowra	Burradool Ave	end	signpost	on road		9		
Moroney Avenue	St. Georges Basin East	Cammaray Dr Reserve	Dumford PI reserve	signpost	On road	210	9		
Mount Scanzi Rd	Kangaroo Valley	Moss Vale Rd	dam	signpost		10,000	9	20logos,10signs	
North head Reserve	Ulladulla	Burrill Street North	North head	shared path	Off road	590	9	Shared path through harbour reserve	
Park Row	Orient Point	Orsova	Tern	shoulders		380	9	and widen road	
Park Row	Orient Point	Tern	Flora Street	shoulders		230	9	consultation	
Penguin Head Rd	Culburra Beach	all	all	signpost		725	9	6logos,4signs,line*2	
Pitman Ave	Ulladulla	Princes Highway	South pacific Cres	signpost	On road	1,300	9	Signpost road for use by cyclists	
Scerri Drive	Kioloa	Murramarang	boat ramp	shared path		460	9	consultation	
West St	Greenwell Point	Greenwell Point Road	Adelaide Ave	signpost		454	9	4logos,2signs,lines*2	
Adelaide St	Greenwell Point	West Street	Greenwell Point Rd	signpost		845	8	10logos,5signs,line*2	
Augusta Place	Mollymook	Top of cul de sac	Clyde Street	signpost	On road	300	8	Signpost road for use by cyclists	
Broughton St	Kangaroo Valley	all	all	signpost		150	8	bikeplan, 2 logos, 2 signs, lines*2	
Crookhaven Dr	Greenwell Point	Bailey	Greens Rd	signpost		480	8	consultation	
Durnford PI reserve	St. Georges Basin East	Moroney Ave	Durnford Place btwn 19 & 21	shared path	Off road	100	8	Shared Path	
Foreshore link	Callala Bay	Emmett	boat ramp/park	shared path	Off road	435	8	consultation	
Foster Drive	Bawley Point	Voyager	Murramarang	signpost		614	8	4logos,4signs,lines*2	
Haiser Rd	Greenwell Point	South Street	Leonore Ave	signpost		470	8	consultation	
Hay Av	Shoalhaven Heads	Wharf Rd	Jerry Bailey Rd	signpost		350	8	4logos,2signs,lines*2	
Jasmine Drive pathway	Bomaderry	Jasmine Drive	Halstead Place	shared path	Off road	313	8	Shared path	
Kings Point Drive	Kings Point	Princes Hwy	George Ave	signpost		2,300	8	consultation	
Lawson Way	St. Georges Basin East	Kerry Street	Cammaray Dr	signpost	On road	210	8	Signpost road for use by cyclists	
McIntosh St	Shoalhaven Heads	Shoalhaven Heads Rd	River Road	signpost		630	8	4logos,2signs,lines*2	
Moondara Drive reserve	North Nowra	Moondara Drive	Warrah Road	shared path	Off road	50	8	Shared path through reserve	
Mulgen Creek reserve	Bomaderry	Jasmine Drive	Ferntree Drive	shared path	Off road	180	8	Shared path	
Myrtle St/Valley View Dr	Milton	Croobyar Road	End of Valley View Drive	signpost	On road	560	8	Signpost road for use by cyclists	
Nobblers Lane, West Berry St & Southern Rd	Terara	Terara Rd (east)	Terara Rd (west)	signpost	On road	600	8	Signpost road for use by cyclists	
Osborne Street (south)	Nowra	Bice Road	Yalwal Road	shared path	Off road	700	8	Shared path through reserves	
Oxley Cres	Mollymook	Robin Cres	Garside Road	signpost	On road	430	8	Signpost road for use by cyclists	
Powall Ave	Ulladulla	Pettys Ave	Did Dell Street	signpost	On road	350	8	Signpost road for use by cyclists	
Princes Highway to Caravan Park Route	Lake Tabourie	Princes Hwy	Caravan Park	shoulders	On road	1,300	8	- consultation - parallel to Wairo Beach	
Robin Place	Mollymook	Oxley Cres	Proposed School Site	signpost	On road	110	8	Signpost road for use by cyclists	
Sealark St	Callala Bay	all	all	signpost	On road	605	8	consultation	

CYCLEWAYS - CITYWIDE

Location	Urban Area	From	To	Works Required	Side	Length	Priority Rating	Issues and details	Other Programs
Suncrest Ave	Sussex Inlet	Badgee Bridge	Tradewinds Ave (north)	signpost	On road	150	8	consultation	
Surfers Ave/Tallwood Rd	Mollymook	Matron Porter Drive	Bannister Head Road	signpost	On road	419	8	Signpost road for use by cyclists	
The Springs Rd	Sussex Inlet	Sussex Inlet Rd	Thomson St	shoulders	On road	1,020	8	Ward 3 Mtg 13 May 2004	
Tradewinds Ave	Sussex Inlet	Suncrest Av (north)	Suncrest Av (south)	signpost	On road	630	8	consultation	
Voyager Cres	Bawley Point	Foster	Murramarang	signpost		1,500	8	consultation	
Waratah St	Bendalong	Maple	Poplar	shared path		155	8	2m wide linemark and logos	
Wonga Pl & Dumford Pl	St.Georges Basin East	start of each	cul-de-sac	signpost	On road		8		
Amundsen Ave	Shoalhaven Heads	Scott	Noakes St	signpost		312	7	2logos, 2 signs, lines*2	
Augusta Place reserve	Mollymook	Garside Rd	Augusta Place	shared path	Off road	200	7	Shared path	
Boorawine Terrace	Callala Bay	Watt	Murray	signpost	On road	238	7	2logos, 2 signs, lines*2	
Broadview Av	Culburra Beach	East	Silvermere	signpost		728	7	6logos,4signs,line*2	
Carlton Cres	Culburra Beach	all	all	signpost		730	7	6logos,4signs,line*2	
Gerroa Rd	Shoalhaven Heads	Seven Mile Beach National Park	Noakes St	signpost		280	7	2logos, 2 signs, lines*2	
Goonawarra Drive	Cudmirrah	Collier Dr	Berrara Rd	signpost		910	7	4logos,2signs,lines*2	
Greentree Ave	Sussex Inlet	all	all	signpost	On road	140	7	2logos, 2 signs, lines*2	
Greenway Rd	Callala Beach	Callala Beach Rd	Lennox Rd	shared path		640	7	consultation	
Ingle Ring	Culburra Beach	all	all	signpost		729	7	6logos,4signs,line*2	
Lennox Rd	Callala Beach	Greenway	Watts	shared path		305	7	consultation	
Loralyn Ave reserve	St.Georges Basin East	Wool Lane	Cammaray Dr	shared path	Off road	730	7	Mix of on road signposted route and shared path	
Lyndhurst Dr	Bomaderry	Shanklin Cl	Leonard St	signpost	on road		7		
Marine Pde	Callala Bay	Murray	Lookout	signpost	On road	483	7	6logos,4signs,line*2	
Marine Pde	Callala Bay	Lookout	Lackerstein	shared path	Off road	455	7	consultation	
Murray St	Callala Bay	Boorawine	Marine	signpost	On road	145	7	consultation	
Noakes St	Shoalhaven Heads	Gerroa	Amundsen	signpost		240	7	2logos, 2 signs, lines*2	
Orama/Orontes	Orient Point	Orient	Orient	signpost		830	7	4logos,4signs,lines*2	
Orient Ave	Orient Point	Orontes	Orama	signpost		390	7	2logos, 2 signs, lines*2	
Orient Point Rd	Culburra Beach	Raglan	Flora Street	signpost		727	7	6logos,4signs,line*2	
Princess St	Callala Beach	Quay Rd	Myola Rd	shared path		130	7	consultation	
Quay Rd	Callala Beach	Princess	Callala Beach Rd	shared path		1,300	7	consultation	
Scott St	Shoalhaven Heads	Amundsen	Explorer	signpost		127	7	2logos, 2 signs, lines*2	
The Springs Rd	Cudmirrah	SLWSC Ramp	Goonawarra Drv	shared path		990	7	Ward 3 Mtg 13 May 2004	
Wasdale Place pathway	Bomaderry	Wasdale Place	Lyndhurst Drive	shared path	Off-road	89	7	- widen path for Shared use	
Wonga Pl reserve	St.Georges Basin East	Wonga Place	Claylanda Dr	shared path	Off road		7		
Bailey Ave	Greenwell Point	Crookhaven	Greens Rd	signpost		306	6	6logos,4signs,line*2	
Beach St/Catherine St	Myola	Toilets	Ramp	signpost		150	6	2logos, 2 signs, lines*2	
Bridge Road	Nowra	Scenic Drive	North Street	signpost	On road	550	6	Signpost road for use by cyclists	

CYCLEWAYS - CITYWIDE

Location	Urban Area	From	To	Works Required	Side	Length	Priority Rating	Issues and details	Other Programs
Foreshore Res	Greenwell Point	parallel to Haiser Rd from Fraser Avenue	to link as close as possible to South St	shared path		540	6		
Harrington Cres	Bawley Point	Terragong	Malibu	signpost		270	6	consultation	
Hoskins Street Reserve	North Nowra	Hoskins Street	McMahons Road	shared path	Off road	230	6	Shared path through reserve	
Leonore Ave	Greenwell Point	Haiser	Greens Rd	signpost		150	6	2logos, 2 signs, lines*2	
Lurnea Ave	Bawley Point	Murramarang	Terragong	signpost		270	6	consultation	
Malibu Drive	Bawley Point	Harrington	Sanderling	signpost		1,500	6	8logos,4signs,	
Mick Ryan Park	Milton	Valley View Dr	Princes Highway	shared path	Off road	185	6	Shared path through reserve	
Murilla Ave	Bawley Point	all	all	signpost		140	6	2logos, 2 signs, lines*2	
Terragong Ave	Bawley Point	Lurnea	Harrington	signpost		116	6	consultation	
The Bulwark to Alaska St along Manyana Beach	Manyana	Link from Manyana	Cunjurong	shared path		500	6		
Tingira Drive	Bawley Point	all	all	signpost		1,000	6	consultation	
Wallaroy Drive	Dolphin Point	Wyoming	Princes Hwy	signpost		170	6	2logos, 2 signs, lines*2	
Lake Conjola Caravan Park	Lake Conjola	front of caravan park		shared path		50	5		
Monk Cres	Bomaderry	Lyndhurst drive	Meroo Road		On/Off road	480	5	Mix of on and off road route	
Beach Ride	Myola	Beach St	along Beach front	signpost		2,400	2	6signs	
Revisions to list									
Check all 2005 Shoalhaven Bicycle Strategy routes updating list accordingly.									
The Springs Rd	Swanhaven							The Sussex Inlet & Districts Community Forum & the Principal Consultative Body wish the bicycle route to go through Swanhaven Lakehaven Drive. The Swanhaven Progress Association object and prefer a route beside Springs Road.	D04/78603; D04/102922 27860-02 Sussex Inlet/Cudmirrah Cycleway Route
Princes Highway	Ulladulla	St Vincent St	16m south	widen footpath	eastern	16	Very High	Issue raised by BUG	D04/51872
St Vincent Street	Ulladulla	Green Street	Ulladulla High School	widen footpath	western	200	Very High		Ulladulla/Harbour Cycleway Route
Green Street	Ulladulla	St Vincent St	Ulladulla Public School	widen footpath	Northern	100	Very High		Ulladulla/Harbour Cycleway Route
Princes Highway	Ulladulla	Green Street	Ulladulla Tourist Information Centre	widen footpath	western	100	Very High	To provide a link to a mid block pedestrian crossing facility and the Ulladulla Harbour Cycleway	Ulladulla/Harbour Cycleway Route
Albatross Road	Nowra Hill	Braidwood Rd	HMAS Albatross main entrance	shoulders	On-road	700			
Moss Vale Rd	Kangaroo Valley	Hampden Bridge	Upper River Road	shared path	Eastern	800		D05/975 File 6246 Kangaroo Valley Pathways Action Group	Kangaroo Valley Cycleway Route
Moss Vale Rd	Kangaroo Valley	Upper River Road	Grahams Road	shared path	eastern	2,000		D05/975 File 6246 Kangaroo Valley Pathways Action Group	Kangaroo Valley Cycleway Route
Moss Vale Rd	Kangaroo Valley	Nugents Creek Rd	Kangaroo Valley Rd	shared path	Northern	1,600		D05/975 File 6246 Kangaroo Valley Pathways Action Group	Kangaroo Valley Cycleway Route
Round the Bay Walk	Vincentia	Vincentia Shops	Plantation Point	shared path	Off-road			Plan of Management?	

CYCLERACKS

Urban Area	Location	Works Required	Priority Rating	Cost	Issues and details
Huskisson	NE kerb extension Intersection of Owen & Currambene St	bike parking	3	\$2,500	5 racks
Shoalhaven Heads	butcher	bike parking	3	\$2,500	5 racks
Shoalhaven Heads	skateboard ramp	bike parking	3	\$2,500	5 racks
Shoalhaven Heads	post office	bike parking	3	\$2,500	5 racks
Shoalhaven Heads	surf club near Staples St	bike parking	3	\$2,500	5 racks
Shoalhaven Heads	Swimming Pool	bike parking	3	\$2,500	5 racks
Shoalhaven Heads	community centre	bike parking	3	\$2,500	5 racks
Shoalhaven Heads	sports Complex near tennis club	bike parking	3	\$2,500	5 racks
Sussex Inlet	iga supermarket	bike parking	3	\$2,500	5 racks
Sussex Inlet	sussex Inlet pharmacy	bike parking	3	\$2,500	5 racks
Sussex Inlet	community board	bike parking	3	\$2,500	5 racks
Callala Bay	next to Community Centre	bike parking	2	\$2,500	5 racks
Callala Bay	General Store	bike parking	2	\$2,500	5 racks
Camberwarra	playing fields	bike parking	2	\$2,500	5 racks
Greenwell Point	Swimming Pool	bike parking	2	\$2,500	5 racks
Greenwell Point	jetty	bike parking	2	\$2,500	5 racks
Greenwell Point	newsagency	bike parking	2	\$2,500	5 racks
Dolphin Point	seafood shop	bike parking	1	\$2,500	5 racks
HMAS Albatross	at school and units	bike parking	1	\$2,500	5 racks
Kangaroo Valley	Osbourne Park swimming pool	bike parking	1	\$2,500	5 racks
Kioloa	playing fields, Murramarang Rd	bike parking	1	\$2,500	5 racks

Footpaths Project List

Priority Projects								
1. To complete high priority pedestrian path projects								
2. To allocate a portion of funding for pedestrian paths each year to villages within SCC								
Location	Urban Area	From	To	Works Required	Side	LENGTH	Priority Rating	Issues and details
Green Street	Ulladulla	Camden Street	Warden Street	Ped path	Southern	610	33	- Gap in footpath on southern side - Provide access to schools, TAFE and sports centre - Existing footpath on north side
Lyndhurst Drive	Bomaderry	Jasmine Drive	Helsinki Pde	Ped path	Western	682	27	- Currently no footpaths on either side of the road - Provides access to schools, recreation area, shops and bus stops - Could serve as a pedestrian route for the north Bomaderry area
The Wool Road	Vincentia	end of existing shared path	Burton St	Ped path	Southern	360	27	- Provide footpath access to bus stop
Illaroo Road	North Nowra	Philip Drive	Halcot Avenue	Ped path	Northern	703	26	- No footpath on northern side - Provide access to public school and churches
Coomea Street	Bomaderry	Birreley Street	Cambewarra Road	Ped path	Eastern	203	24	- No footpaths on either side - Complete gap in pedestrian network
Hillcrest Avenue	East Nowra	Holloway Drive	Old Southern Road	Ped path	Northern	1008	24	- No footpath on either side - Provide access to High School and Playing fields
Jasmine Drive	Bomaderry	Cambewarra Road	Cocos Palm Dr	Ped path	Eastern		24	
Lyndhurst Drive	Bomaderry	Cambewarra Road	Carisbrook Close	Ped path	Western	642	24	- Currently no footpaths on either side of the road - Provides access to schools, recreation area, shops and bus stops - Could serve as a pedestrian route for the north Bomaderry area
North Street	Ulladulla	Princes Highway	Jindelara Road	Ped path	Northern	721	24	
Park Road	East Nowra	Clipper Road	Holloway Drive	Ped path	Southern	261	24	- No footpath on either side - Provide access to High School and Playing fields
Princes Highway	Bomaderry	Narang Road	Turley Ave	Ped path	Western	1092	24	- Stage 2 (Pt) Narang Rd south approx 400m considered for 04/05 - Currently no footpath on either side of Highway - Provides access to Restaurants, Service Station and houses - Safety concerns about pedestrians currently walking in parking lane of Highway
Princes Highway	Milton	Retirement Village	Croobyar Street	Ped path	Northern	373	24	- No footpath on northern side - Connect to planned shared paths - Connect to proposed traffic signals
Greenwell Point Road	Nowra	Rayleigh Drive	Clipper Road	Ped path	Southern	494	23	- No footpath on either side - Provide access to new Residential area
Page Avenue	North Nowra	Harvey Place	Judith Drive	Ped path	Northern	286	23	- No footpath on either side - Provide access to Public School - Pedestrian access through Residential area
Paradise Beach Road	Sanctuary Point	Kingsford Smith Crescent	Kerry Street	Ped path	Northern	288	23	- No footpath on northern side - Provide access to Shops and Schools - majority to be provided with development
Princes Highway	Ulladulla	Golf Avenue	Narrawallee St	Ped path	Eastern	345	23	- No footpath on either side - Segment of total section St Vincent St to Millards Creek bridge - Report 11 March 2003 Stage 2 \$13,000 File 25492
Village Drive	Ulladulla	Budawang Street	North Street	Ped path	Western	602	23	- No footpath on either side - Connect growing residential area to schools and centre of Ulladulla
Albatross Road	Nowra	McLean Street	Kalandar Street	Ped path	Northern	642	22	- No footpath on either side - Provide access to University, Greyhound Course, Paceway and Racecourse - Connect two existing footpaths
Douglas Street	Nowra	Kinghorne Street	Shoalhaven Street	Ped path	Northern		22	
Princes Highway	Ulladulla	100m north of Pittman Avenue	Pittman Avenue	Ped path	Eastern	100	22	- Provide access to bus stop
Princes Highway	Ulladulla	Deering St	Parson St	Ped path	Western	200	22	
Barwon Street	Bomaderry	Bunberra Street	Cambewarra Road	Ped path	Western	451	21	- No footpath on either side - Provides access to Anglican School
Douglas Street	Nowra	Wallace Street	Kinghorne Street	Ped path	Northern	1124	21	- No footpath on either side - Provide access to three public schools, park & motel
Gordon Street	Milton	Croobyar Road	Princes Highway	Ped path	Western	161	21	- No footpath on either side - Provide access to Hospital and Shops
OSBORNE ST	NOWRA	WORRIGEE ST	Douglas Street	Ped path	eastern		21	
Park Road	East Nowra	Moresby Street	Holloway Drive	Ped path	northern	51	21	- Provide access to schools

Location	Urban Area	From	To	Works Required	Side	LENGTH	Priority Rating	Issues and details
Park Road	East Nowra	Princes Highway	Moresby Street	Ped path	Northern	342	21	- No footpath on either side - Provide access to High School and Playing fields
Princes Highway	Nowra	Plunkett Street	Douglas Street	Ped path	Western	209	21	- No footpath on western side - Provide access to Shops - Extend existing footpath
Princes Highway	Ulladulla	Buchan Street	Golf Avenue	Ped path	Northern	246	21	- No footpath on either side - Connects two existing footpaths
Princes Highway	Ulladulla	Millards Ck	North Street	Ped path	Western	284	21	- No footpath on either side - Connects two existing footpaths
St Vincent Street	Ulladulla	Princes Highway	Godfrey Street	Ped path	Western	297	21	- No footpath on either side - Connects two existing footpaths
Berry Street	Nowra	Bice Rd	Albatross Rd	Ped path	Western	657	20	- No footpath on western side - Provide access to Public School - Pedestrian access through Residential area
Osborne Street	Nowra	North Street	Hyam Street	Ped path	Eastern	375	20	- No footpath on either side - Provide access to Hospital and Pool
Princes Highway	East Nowra	Hillcrest Ave	Park Road	Ped path	Eastern	996	20	- No footpath on either side - Provide access to High School and Playing fields
South Street	Ulladulla	Princes Highway	St Vincent Street	Ped path	Northern	224	20	- No footpath on either side - Connects two existing footpaths
St Anns Street	East Nowra	Salisbury Drive	Wallace Street	Ped path	Southern	694	20	- No footpath on either side - Provide access to Residential area
Forrest Way	Mollymook	Carroll Avenue	Treetops Cr(E)	Ped path	Northern		19	
Jacobs Drive	Sussex Inlet	Sandpiper Way	Bridge	Ped path	Southern	700	19	Inspection required No footpath
Jasmine Drive	Bomaderry	Cocos Palm Dr	Sheraton Cr (sth)	Ped path	Eastern		19	
Princes Highway	East Nowra	Browns Rd	Hillcrest Avenue	Ped path	Eastern		19	
Princes Highway	Ulladulla	South Street	(north)	Ped path	Western		19	Provide pram ramp and footpath on north-west corner to make continuous footpath along western side
Shoalhaven Street	Nowra	Douglas Street	Junction Street	Ped path	Eastern	665	19	- No footpath on either side - Provide access to Playing fields and Showground
Vigilant St	Ulladulla	South Street	Morris St reserve	Ped path	Eastern		19	
Wason Street	Milton	Croobyar Road	Charles Street	Ped path	Western	231	19	- No footpath on either side - Connects existing and planned footpaths
Brinwarr Street	Bomaderry	Property No, 46	Tarawara Street	Ped path	Eastern	150	18	- No footpath on either side & extension off SUP - Provide continuous pedestrian path through Residential area - Access to TAFE
Bunberra Street	Bomaderry	Tarawal Street	Brinawarr Street	Ped path	Southern	644	18	- No footpath on either side - Access to Railway Station and shops
Clipper Road	East Nowra	Kameruka Cres (nth)	Abergeldie Street	Ped path	Eastern	165	18	- No footpath on eastern side - Provide access to schools and shops - Pedestrian access into Residential area
Deering Street	Ulladulla	Camden Street	St Vincent Street	Ped path	Southern	229	18	- No footpath on either side - Connect two planned shared paths
Hillcrest Avenue	East Nowra	John Purcell Way	Holloway Drive	Ped path	Northern	440	18	
Jasmine Drive	Bomaderry	Sheraton Cr (sth)	Sheraton Cr (nth)	Ped path	Eastern		18	
Judith Drive	North Nowra	McMahons Road	School	Ped path	Western	636	18	- No footpath on either side - Provide access to Public School
Kerry Street	Sanctuary Point	Paradise Beach Road	Clifton Street	Ped path	Western	199	18	- No footpath on either side - Provide access to Shops
Kerry Street	Sanctuary Point	Anson St	east of Jean Street	Ped path	Northern	850	18	- No footpath on either side - Connects existing and planned footpaths
Links Avenue	Sanctuary Point	Kerry Street	Waratah Crescent	Ped path	Eastern	39	18	- No footpath on either side - Provide access to Bowling Club
McKay Street	East Nowra	Princes Highway	Queenborough Street	Ped path	Northern	505	18	- No footpath on either side - Provide access to High School and shops
North Street	Ulladulla	Princes Highway	Burrill Street	Ped path	Southern	313	18	- No footpath on either side - Connects existing and planned footpaths
Nowra Lane	Nowra	Worrigeer Street	Junction Street	Ped path	Western	125	18	- Report 11 March 2003 Consider 2003/04 \$50,000 File 25492 - Budget \$34,000 - Design \$3,000 in 2002/03
Shepherd Street	Mollymook	Ocean Street	Golf Avenue	Ped path	SW	139	18	- Connect existing footpaths
Warramunga Street	East Nowra	Secombe Street	Kalandar Road	Ped path	Western	189	18	- No footpath on either side - Provide access to Residential area
Brinwarr Street	Bomaderry	Tarawara Street	Cambewarra Road	Ped path	Eastern	536	17	- No footpath on either side - Provide continuous pedestrian path through Residential area - Access to TAFE
Castle Glen	North Nowra	Jamieson Road	Primary School	Ped path	Southern	310	17	- No footpath on either side - Provide access to Public School - Pedestrian access through Residential area
Church Street	Milton	Thomas Street	Princes Highway	Ped path	Western	236	17	- No footpath on either side - Provide access to Public School
ELIZABETH DV	VINCENTIA	ARGYLE ST	THE WOOL RD	Ped path	Western	0	17	
Federation Place	North Nowra	Jamieson Road	end	Ped path	Southern	116	17	- No footpath on either side - Connect to proposed Shared Path

Location	Urban Area	From	To	Works Required	Side	LENGTH	Priority Rating	Issues and details
Hansons Road	North Nowra	Dr Campbell's Surgery	McMahons Road	Ped path	Western	163	17	- No footpath on either side - Provide access to Surgery for Patients
Hansons Road	North Nowra	Dr Campbell's Surgery	Clarke Avenue	Ped path	Western	218	17	- No footpath on either side - Provide access to Public School - Pedestrian access through Residential area
Jamieson Road	North Nowra	Federation Place	Castle Glen	Ped path	Southern	114	17	- No footpath on either side - Connect to proposed Shared Path
Kinghome Street	Nowra	Kalandar Street	McKay Street	Ped path	Western	278	17	- Extend existing footpath, continue pedestrian route
Leonard Street	Bomaderry	Lyndhurst Drive	Sampson Street	Ped path	Southern	103	17	- Currently no footpaths on either side of street - Connects Jasmine Drive to proposed shared path - Provides access to Bomaderry Public School
Ocean Street	Mollymook	Turner Street	Davies Street	Ped path	Southern	81	17	- No footpath on either side - Provide access to Shops
Princes Highway	East Nowra	Park Road	McKay Street	Ped path	Eastern		17	- No footpath on either side - Provide access to High School and Playing fields
Princes Highway	Milton	Gordon Street	Croobyar Street	Ped path	Southern	523	17	- No footpath on southern side - Connect to planned shared paths - Connect to proposed traffic signals
Sydney Street	Huskisson	Tomerong Street	Watt Street	Ped path	Western	86	17	- Provide access to schools
Tomerong Street	Huskisson	Sydney Street	Woollamia Road	Ped path	Southern	230	17	- No footpath on southern side - Provide access to school and connect planned pedestrian route
WORRIGEE ST	NOWRA	Burr Ave	West Street	Ped path	Southern	97	17	
Deering Street	Ulladulla	Princes Highway	Thadalee Place	Ped path	Northern	658	16	- No footpath on either side - Provide access to playing fields and headland
ELIZABETH DV	VINCENTIA	SUSAN ST	EDWARD ST	Ped path	Western	0	16	
ELIZABETH DV	VINCENTIA	Edward St	ARGYLE ST	Ped path	Western	0	16	
Fegen Street	Huskisson	Bowen Street	Nowra Street	Ped path	Eastern	234	16	- No footpath on either side - Provide access to Caravan Park
Haigh Avenue	Nowra	Worrigeer Street	Plunkett Street	Ped path	Western	64	16	-Provide access to Businesses
Jervis Street	East Nowra	Wallace Street	Pedestrian Crossing	Ped path	Southern	30	16	-Provide connection between crossing and footpath on Wallace Street
Lawrence Avenue	Nowra	Plunkett Street	Worrigeer Street	Ped path	Western	223	16	-Provide access to shops
Lawrence Avenue	Nowra	Plunkett Street	Council carpark	Ped path	Eastern	223	16	-Provide access to shops
Lumsden Road	North Nowra	Judith Drive	end	Ped path	Southern	251	16	- No footpath on either side - Provide access to Shops and Playing Field
Neilson Road	Sussex Inlet	Finch Pl	Ellmoos Av	Ped path	Eastern	160	16	Provide footpath 60m north of Elmoos Av
North Street	Nowra	West Street	Shoalhaven Street	Ped path	Southern	223	16	- No footpath on either side - Provide access to Playing fields and Showground
Nowra Street	Huskisson	Fegen Street	Beach Street	Ped path	Southern	145	16	- No footpath on either side - Provide access to existing shared path
Pleasant Way	Nowra	Hawthorn Avenue	Princes Highway	Ped path	Southern	150	16	- Connect Pedestrian Route
Scenic Drive	Nowra	Swimming Pool	Shoalhaven Street	Ped path	Southern	249	16	- No footpath on either side - Provide access to Hospital
Tannery Road	Berry	Pulman St	Hospital	Ped path	southern	1100	16	- Consultation through Berry/Gerrigong Rotary Club
Bice Street	Nowra	Berry Street	Osborne Street	Ped path	Northern	223	15	- Connect two planned pedestrian routes
Camden Street	Ulladulla	South Street	Green Street	Ped path	Eastern	374	15	- No footpath on either side - Provide access to Schools - Connect two planned shared paths
Coomea Street	Bomaderry	Tarawal Street	Bunberra Street	Ped path	Eastern	95	15	- No footpaths on either side - Complete gap in pedestrian network
Crest Avenue	North Nowra	Illaroo Road	Yurunga Drive	Ped path	Northern and western	191	15	- No footpath on either side - Provide access to Public School - Pedestrian access through Residential area
Douglas Street	Nowra	Shoalhaven Street	West Street	Ped path	Northern	215	15	- No footpath on either side - Provide access to Playing fields and Showground
Ferry Lane	Nowra	Riverview Road	Terara Road	Ped path	Western	228	15	- No footpath on either side - Provide access to high school and riverbank
Goolagong Street	North Nowra	Page Avenue	bend	Ped path	Western	104	15	- No footpath on either side - Provide access to Public School and Playing Field
Hyam Street	Nowra	Shoalhaven Street	Bridge Road	Ped path	Southern	407	15	- No footpath on either side - Provide access to Hospital
Isa Road	Worrigeer	Old Southern Road	end (Mall Rd)	Ped path	Northern	318	15	- No footpath on either side - Provide access to Residential area
Morris Street	Ulladulla	Warden Street	bend	Ped path	Southern	313	15	- No footpath on either side - Connect two planned shared paths
O'Connell Lane	Nowra	Worrigeer Street	Junction Street	Ped path	Western	137	15	- Provide access to Shops
Old Southern Road	Worrigeer	Greenwell Point Road	Christian Community School	Ped path	Eastern	2078	15	- No footpath on either side - Provide access to High School and Residences
Page Avenue	North Nowra	Judith Drive	Pitt Street	Ped path	Northern	459	15	- No footpath on either side - Provide access to Public School - Pedestrian access through Residential area

Location	Urban Area	From	To	Works Required	Side	LENGTH	Priority Rating	Issues and details
Peak Avenue	North Nowra	Yurunga Drive	Hansons Road	Ped path	Northern	492	15	- No footpath on either side - Provide access to Public School - Pedestrian access through Residential area
Seccombe Street	East Nowra	St Anns Street	Warramunga Street	Ped path	Southern	175	15	- No footpath on either side - Provide access to Residential area
Shoalhaven Street (Con.)	Nowra	Scenic Drive	Hyam Street	Ped path	Eastern	665	15	- No footpath on either side - Provide access to Playing fields and Showground
The Wool Road	Basin View	John Street	Tallyan Point Road	Ped path	Southern	306	15	- No footpath on either side - Provide access to Retirement Village and Shops
Village Drive	Ulladulla	North Street	Golden Wattle Drive	Ped path	Western	663	15	- No footpath on either side - Connect growing residential area to schools and centre of Ulladulla
West Street	Nowra	North Street	Jervis Street	Ped path	Western	885	15	- No footpath on either side - Provide access to Playing fields and Showground
Yurunga Drive	North Nowra	Crest Avenue	Peak Avenue	Ped path	Western	58	15	- No footpath on either side - Provide access to Public School - Pedestrian access through Residential area
Boag/Wallace Streets	Mollymook	Shepherd St	end	Ped path	Southern	735	14	- No footpath on either side - Connect residential area to beach and shops
Hawke Street	Huskisson	Bowen Street	Nowra Street	Ped path	Western	69	14	- No footpath on either side
Idlewild Avenue	Sanctuary Point	Kingsford Smith Crescent	School	Ped path	Northern	140	14	- No footpath on either side - Provide access to Public School
Jervis Street	Nowra	Shoalhaven Street	Kinghorne Street	Ped path	Northern	673	14	- No footpath on either side - Connect to existing footpath west of Highway
Kerry Street	Sanctuary Point	Anson St	The Wool Lane	Ped path	Northern	370	14	- No footpath on either side
Maybern Close	North Nowra	Illaroo Road	Farrar Drive	Ped path	Southern	220	14	- No footpath on either side - Provide access to Public School - Connect two planned shared paths
Owen St	Huskisson	Termeil Street	Sydney Street	Ped path	Southern	225	14	- No footpath on either side - Extends existing footpath
Princes Highway	Ulladulla	Village Drive	Buchan Street	Ped path	Northern	767	14	- No footpath on either side - Connect two planned footpaths
St George Avenue	Vincentia	The Wool Road	Excellent Street	Ped path	Eastern	137	14	- No footpath on either side - Provide access to Residential area
Sydney Street	Huskisson	Bowen Street	Owen Street	Ped path	Eastern	187	14	- Provide alternative access to caravan park
Tallwood Avenue	Mollymook	Parkview Parade	Bannister Head Road	Ped path	Eastern	405	14	- No footpath on either side - Provide access to Shops - Connect two planned shared paths - Report 11 March 2003 Consider for 2003/04 \$ \$34,000 File 25492
West Birreley Street	Bomaderry	Barwon Street	Princes Highway	Ped path	Southern	259	14	- No footpath on either side - Provides connection between Highway and Sports/School Areas - Provides connection between residential area and Narang Road Walking Trail
Yurunga Drive	North Nowra	Gleneagle Parade	end	Ped path	Northern	336	14	- No footpath on either side - Provide access to Public School - Pedestrian access through Residential area
Ambassador Avenue	North Nowra	Gleneagle Parade	Clarke Avenue	Ped path	Southern	60	13	- No footpath on either side - Provide access to Public School - Pedestrian access through Residential area
Bannister Head Road	Mollymook	Matron Porter Drive	Tallwood Avenue	Ped path	Northern	287	13	- No footpath on either side - Provide access to Shops - Connect two planned shared paths
Bowen Street	Huskisson	Duncan Street	Fegen Street	Ped path	Northern	635	13	- No footpath on either side - Provide access to Tourist Parks
Bunberra Street	Bomaderry	Barwon Street	Tarawal Street	Ped path	Southern	321	13	- No footpath on either side, culvert forces pedestrians onto road - Connect to planned footpath east of Brinwarr Street and shops - Access to Railway Station
Cammaray Dr	Sanctuary Point	Wool Lane Sporting Complex Access Rd	The Wool Lane Reserve	Ped path	Northern	150	13	- No footpath on either side - Connect footpaths through reserves to the access into Wool Road Sporting Complex
Centaur Avenue	Sanctuary Point	Idlewild Avenue (School Entrance)	Pelican St	Ped path	Northern	120	13	- No footpath
Clarke Avenue	North Nowra	Hansons Road	Ambassador Avenue	Ped path	Northern	227	13	- No footpath on either side - Provide access to Public School - Pedestrian access through Residential area
Currambene Street	Huskisson	Owen Street	Keppel Street	Ped path	Western	681	13	- No footpath on either side - Provide access to Shops - Extend existing footpath
Did-Dell Street	Ulladulla	Rennys Beach Close	South Street	Ped path	Western	582	13	- No footpath on either side - Extend recreational walk
Fuschia Close	Bomaderry	Jasmine Drive	Tennis Courts	Ped path	North/East	125	13	- No footpaths on either side of the road - Connect playing fields to Jasmine Drive

Location	Urban Area	From	To	Works Required	Side	LENGTH	Priority Rating	Issues and details
George Caley Place	Vincentia	The Wool Road	Entire length	Ped path	Eastern	135	13	George Caley Place (VINCENTIA) shown as 'footpath already included in Council's program'. NOT TRUE. There is an existing path on the Western Side of George Caley Place (The Wool Road to School Access). Change colour on plot to existing path. and mark additional path (on EAST side) as low priority.
Gleneagle Parade	North Nowra	Ambassador Avenue	Yurunga Drive	Ped path	Eastern	266	13	- No footpath on either side - Provide access to Public School - Pedestrian access through Residential area
Jervis Street	Greenwell Point	Greenwell Point Road	School	Ped path	Western	130	13	- No footpath on either side - Provide access to School
McDonald Avenue	Nowra	Albatross Road	end	Ped path	Eastern	526	13	- Connect two planned pedestrian routes
Milbank Road	Terara	Terara Rd	Terara Public School	Ped path	Western	175	13	- No footpath on either side - Provide access to School
Mitchell Parade	Mollymook	Tallwood Avenue	Bannister Head Road	Ped path	Northern	483	13	- No footpath on either side - Help pedestrians up steep grade
Nellore Place	North Nowra	Pitt Street	end	Ped path	Northern	82	13	- No footpath on either side - Provide access to Public School - Connect two planned shared paths
Philip Drive	North Nowra	Castle Glen	end	Ped path	Southern		13	
Plunkett Street	Nowra	Shoalhaven Street	West Street	Ped path	Southern	215	13	- No footpath on either side - Provide access to Playing fields and Showground
Princes Highway	Ulladulla	St Vincent Street	North Street	Ped path	Western	717	13	- No footpath on either side - Connects two existing footpaths
Sampson Street	Bomaderry	Leonard Street	reserve east side	Ped path	Eastern	156	13	- Currently no footpaths on either side of street - Connects Jasmine Drive to proposed shared path - Provides access to Bomaderry Public School
Tallyan Point Road	Basin View	The Wool Road	Mathie Street	Ped path	Northern	926	13	- No footpath on either side - Provide access to Public School - Connect to existing footpath
Village Drive	Ulladulla	Timbs Street	Golden Wattle Drive	Ped path	Eastern	243	13	- No footpath on either side - Connect growing residential area to schools and centre of Ulladulla
West Bunberra Street	Bomaderry	Bunberra Street	Princes Highway	Ped path	Southern	166	13	- No footpath on either side - Provide access to Anglican School
Excellent Street	Vincentia	St George Ave	Ada Street	Ped path	Northern	550	12	- No footpath on either side - Provide access to shops
Kameruka Close	East Nowra	North Bend	Clipper Road	Ped path	Northern	91	12	- Connect Vacant Land to Clipper Road
Kinghorne Street	Nowra	McKay Street	Princes Highway	Ped path	Western	329	12	- Connect two planned pedestrian routes
Kingsford Smith Crescent	Sanctuary Point	Idlewild Av	Warrego Dr	Ped path	Western	270	12	- No footpath on either side - Provides access to School
Main Road	Camberwarra	Primary School	existing shared path to playing fields	Ped path	northern	120	12	- Provide access to school
Matron Porter Drive	Milton	Princes Highway	Garside Road	Ped path	Northern	1705	12	- No footpath on either side - Link all three towns - Shared path similar to Huskisson to Vincentia path - Create recreational activity - Increase accessibility/mobility for young people
Nooramunga Av	Camberwarra	Bus shelter near Kalinga St	Existing path	Ped path	Off road	45	12	- Extend Existing Footpath past bus shelter - P&C Association request
Philip Drive	North Nowra	Illaroo Road	Castle Glen	Ped path	Eastern	472	12	- No footpath on either side - Connect to proposed Shared Path
Riverview Road	Nowra	Hawthorn Avenue	Ferry Lane	Ped path	Southern	967	12	- Connect Pedestrian Route
Sophia Road	Worrigea	Old Southern Road	end	Ped path	Northern	321	12	- No footpaths in developing subdivision - Provide access to new Residential area
The Lake Circ/Penguin Head Rd	Culburra Beach	Duke St	Canal St	Ped path	Southern	1900	12	PAMP
The Wool Lane	Sanctuary Point	Kerry Street	Cammaray Dr	Ped path	Eastern	200	12	- No footpath on either side
Walmer Street	Sanctuary Point	Paradise Beach Road	Milson Street	Ped path	Western	1073	12	- No footpath on either side - Provide access to Residential area, recreational facilities and shops
Warrego Drive	Sanctuary Point	Kingsford Smith Crescent	Leumeah St	Ped path	Western	350	12	- No footpath on either side - Provides access to School
Watt Street	Huskisson	Park Street	existing path	Ped path	Northern	165	12	- No footpath on either side - Provide access to playing fields
Bowen Street	Huskisson	Sydney Street	Duncan Street	Ped path	Northern		11	
BTU Road	HMAS Albatross	Primary School	residential apartments	Ped path	same side as school	800	11	PAMP
Burrill Street	Huskisson	Keppel Street	Jervis Street	Ped path	Eastern	233	11	- No footpath on either side - Provide access to Caravan Park
Burton Street (Con.)	Vincentia	Existing Footpath	Excellent Street	Ped path	Eastern	78	11	- No footpath on either side - Provide access to Shops
Coniston Close	North Nowra	McMahons Road	end	Ped path	Eastern	109	11	- No footpath on either side - Provide access to Playing Field - Connect two planned shared paths

Location	Urban Area	From	To	Works Required	Side	LENGTH	Priority Rating	Issues and details
Deering Street	Ulladulla	Thadalee Place	Playing field	Ped path	Northern	210	11	- No footpath on either side - Connect planned footpath to planned recreational shared path
Dent Street	Huskisson	Tomerong Street	end	Ped path	Western	246	11	- No footpath on either side - Provide access to two senior citizen facilities
Duncan Street	Huskisson	Jervis Street	Bowen Street	Ped path	Eastern	696	11	- No footpath on either side - Connects two planned shared paths
Ethel Street	Sanctuary Point	Clifton Street	Flora Street	Ped path	Northern	109	11	
Hawthorn Avenue	Nowra	Lyrebird Drive	Riverview Road	Ped path	Eastern	94	11	- Connect Pedestrian Route
Kangaroo Valley Rd	Berry	North Street	Bundewallah Rd	Ped path	Northern	1120	11	- No footpath on either side
Matron Porter Drive	Mollymook	Garside Road	Valley Drive	Ped path	Northern	786	11	- No footpath on either side - Connect two planned shared paths
Millards Creek Reserve	Ulladulla	St Vincent Street	Princes Highway	Ped path	Off-road	245	11	- No footpath on either side - Connects existing and planned footpaths
New Street	Ulladulla	Did-Dell Street	end	Ped path	Northern	245	11	- No footpath on either side - Connect existing footpath to planned recreational shared path
Otway St	Orient Point	Orama	Otranto	Ped path		480	11	PAMP
Powell Avenue	Ulladulla	Pettys Avenue	Did-Dell Street	Ped path	Northern	329	11	- No footpath on either side - Extend recreational walk
St Georges Road	St Georges Basin	Terry Street	Island Point Road	Ped path	Southern	265	11	- No footpath on either side - Provide access to Residential area, Shops and store
The Wool Lane Reserve	Sanctuary Point	Loralyn Av	Cammaray Dr	Ped path	Off road	440	11	- No footpath through reserve - Connect existing footpaths off Nulla Pl to Cammaray Dr, Loralyn Av & The Wool Ln
Ada Street	Vincentia	Elizabeth Street	Excellent Street	Ped path	Western	155	10	- No footpath on either side - Provide access to Residential area
Burrill Street North	Ulladulla	North Street	Conjola Street	Ped path	Western	340	10	- No footpath on either side - Connects planned footpaths
Coral Crescent	Ulladulla	Pitman Avenue	Dowling Street	Ped path	Western	89	10	- No footpath on either side - Extend recreational walk
Elizabeth Drive	Vincentia	Tharwa Street	Sutton Street	Ped path	Western	981	10	- No footpath on either side - Provide access to Recreational walk
Farrelly Place	Bomaderry	Cambewarra Road	end	Ped path	Eastern	115	10	- Connects two proposed shared paths
Frank Lewis Way	Huskisson	Coulon Street	Woollamia Road	Ped path	Western	593	10	- No footpath on either side - Provide access to Recreational area
Golden Wattle Street	Ulladulla	Village Drive	Royal Mantle Dr	Ped path	Southern	296	10	- No footpath on either side - Connect growing residential area to schools and centre of Ulladulla
Island Point Road	St Georges Basin	Meriton Street	end	Ped path	Eastern	486	10	- No footpath on either side - Provide access to Recreational Area
Jasmine Drive	Bomaderry	Sheraton Crt (nth)	Lyndhurst Drive	Ped path	Eastern		10	
Leo Drive	Mollymook	Matron Porter Drive	Manning Ave	Ped path	Eastern		10	
Leo Drive	Mollymook	Manning Ave	Scorpio Gr	Ped path	Eastern		10	
Leumeah Street	Sanctuary Point	Warrego Dr	Edmund St	Ped path	Northern	175	10	
Loralyn Avenue	St Georges Basin	Island Point Road	Meriton Street	Ped path	Southern	311	10	- No footpath on either side - Provide access to Recreational Area
Macleay Street	Mollymook	Matron Porter Drive	Leo Drive	Ped path	Southern	414	10	- No footpath on either side - Provide access for pedestrians with prams, strollers and mobility impairments
Park Street	Huskisson	Tomerong Street	Owen Street	Ped path	Western	340	10	- No footpath on either side - Provide access to playing fields
Pettys Avenue	Ulladulla	Dowling Street	Powell Street	Ped path	Western	100	10	- No footpath on either side - Extend recreational walk
Plantation Point Parade	Vincentia	Elizabeth Street	Jervis Street	Ped path	Nth/East	1002	10	- No footpath on either side - Provide access to Residential area
Rayleigh Drive	Worrigea	Kalandar Street	end	Ped path	Western	273	10	- No footpaths in developing subdivision - Provide access to new Residential area
Reserve Road	Basin View	School Entrance	Mathie Street	Ped path	Southern	329	10	- No footpath on either side - Provide access to Public School
Wasdale Place	Bomaderry	Formby Cl	end	Ped path	Southern		10	- Connects two proposed shared paths
Yurunga Drive	North Nowra	Rock Hill Road	end	Ped path	Northern	580	10	- No footpath on either side - Pedestrian access through Residential area
Buchan Street	Ulladulla	Golf Avenue	Murrumerang Street	Ped path	Southern	336	9	- No footpath on either side - Connects existing and planned footpaths
Cocos Palm Drive	Bomaderry	Jasmine Drive	bend	Ped path	Southern	212	9	- Connects Jasmine Drive to recreational area and shared path
Edmund Street	Sanctuary Point	Leumeah St	Greville Av	Ped path	Western	275	9	
Holden Street (north)	Vincentia	Elizabeth Street	bend	Ped path	Western	111	9	- No footpath on either side - Connects two planned shared paths
Hoskins Street	North Nowra	Yurunga Drive	Lucas Street	Ped path	Northern	159	9	- No footpath on either side - Pedestrian access through Residential area
Keppel Street	Huskisson	Currumbene Street	Burrill Street	Ped path	Northern	397	9	- No footpath on either side - Connects two planned footpaths
Leo Drive	Mollymook	Scorpio Gr	Macleay Street	Ped path	Eastern		9	
Lyrebird Drive	Nowra	Hawthorn Avenue	Riverview Road	Ped path	Northern	755	9	- Connect Pedestrian Route
MacGibbon Parade	Old Erowal Bay	The Wool Road	McGowen Street	Ped path	Northern	787	9	- No footpath on either side - Connects existing and planned shared paths
North Street	Ulladulla	Stanton Drive	Village Drive	Ped path	Southern	385	9	- No footpath on either side - Connect growing residential area to schools and centre of Ulladulla

Location	Urban Area	From	To	Works Required	Side	LENGTH	Priority Rating	Issues and details
Pittman Avenue	Ulladulla	Princes Highway	South Pacific Crescent	Ped path	Southern	456	9	- Provide access to bus stop
Redcliff Park reserve	East Nowra	Greenwell Point Road	Kameruka Close	Ped path	Off-road	429	9	- Vacant land currently used by pedestrians (track worn in grass)
Shoalhaven Street	Nowra	Douglas Street	Jervis Street	Ped path	Eastern	225	9	- Connect Pedestrian Route
Sutton Street	Vincentia	Elizabeth Street	end	Ped path	Western	322	9	- No footpath on either side - Provide access to Residential walk
Terry Street	St Georges Basin	St Georges Road	Tasman Road	Ped path	Eastern	220	9	- No footpath on either side - Provide access to general store and hall
THE WOOL RD	BASIN VIEW	PRINCES HWY	JOHN ST	Ped path	South	2217	9	
Turley Avenue	Bomaderry	Lyndburn Avenue	Princes Highway	Ped path	Southern	261	9	- No footpath on either side - Provide connection to Residences
Augusta Place	Mollymook	Clyde Street	end	Ped path	Eastern	278	8	- No footpath on either side - Connect two planned shared paths
Claylands Drive Reserve	St Georges Basin East	Claylands Dr	Cammaray Dr	Ped path	Off road	370	8	- No footpath through reserve - Connecting Kurraba PI, Wonga PI, Jackson CI with Claylands & Cammaray Drives
Clyde Street	Mollymook	Mitchell Parade	Augusta Place	Ped path	Northern	734	8	- No footpath on either side - Connect two planned shared paths
Did-Dell Street	Ulladulla	Powell Avenue	Rennys Beach Close	Ped path	Western	95	8	- No footpath on either side - Extend recreational walk
McGowen Street	Old Erowal Bay	MacGibbon Parade	Page Street	Ped path	Eastern	394	8	- No footpath on either side - Connects existing and planned shared paths
Robin Place	Mollymook	Oxley Crescent	end	Ped path	Western	134	8	- No footpath on either side - Provide access to School - Connect to planned shared path
South Pacific Crescent	Ulladulla	bend	Coral Cr	Ped path	Western	452	8	- No footpath on either side - Extend recreational walk
Vendetta St	East Nowra	Vendetta St	existing path	Ped path	Off road	10	8	- Finish footpath - Provide access for pedestrians with prams, strollers and mobility impairments
Wool Lane	St Georges Basin East	Kerry Street	access to reserve to west	Ped path	Western	102	8	- No footpath on either side - Connects planned footpaths
Park Road	East Nowra	Kembla Close	Park Rd	Ped path	Off road	85	7	- No footpath through reserve - Provide access for pedestrians with prams, strollers and mobility impairments
Supply St reserve	East Nowra	Allowrie Crescent	Allowrie Crescent	Ped path	Off road	191	7	- Extend existing footpath, continue pedestrian route
Beinda St	Bomaderry	Princes Hwy	Bowong Road	Ped path			5	
Jasmine Drive	Bomaderry	Cambewarra Road	Lyndhurst Drive	Ped path	Eastern	1259	5	- Currently no footpaths on either side of the road - Provides access to schools, recreation area, shops and bus stops - Could serve as a pedestrian route for the north Bomaderry area
Lake Conjola entrance road	Lake Conjola	Norman	Bowling Club	Ped path	Southern	160	11	
Monk Cres	Bomaderry	Lyndhurst drive	Meroo Road		On/Off road	480	5	Mix of on and off road route
Carmen Place	Ulladulla	Park	Rundle Street	Ped path	Southern	77	4	- No footpath on either side - Connect two planned shared paths
Leo Drive	Mollymook	Matron Porter Drive	Macleay Street	Ped path	Eastern	1689	4	- No footpath on either side - Provide access for pedestrians with prams, strollers and mobility impairments
Rundle Street	Ulladulla	Carmen Place	South Street	Ped path	Western	109	4	- No footpath on either side - Connect two planned shared paths
Elizabeth Drive	Vincentia	Ilfracombe Avenue	Ada Street	Ped path		2284	3	- No footpath on either side - Provide access to Shops and Schools
MCTERNAN PL	Worrigee	GUINEA FLOWER CR	MCTERNAN PL	Ped path	Off road	0	3	
River Road	Lake Tabourie	Lyra Drive	Bridge	Ped path	Western??	375	3	Inspection required No footpath
BIMBIMBIE AVE pathway	Bangalee	BIMBIMBIE AVENUE	Lockhaven Dr	Ped path	Off road	0	2	
RANGER GV pathway	Bangalee	RANGER GROVE	Lockhaven Dr	Ped path	Off road	0	2	
REBECCA GR pathway	Bangalee	REBECCA GROVE	Lincoln Close	Ped path	Off road	0	2	

Shoalhaven Pedestrian Access and Mobility Plan
Schedule of Engineering Works - List of Cost Unit Rates

Item Number	Item	Option	Cost	Unit
1	Pedestrian Refuge	a. Basic Refuge (minimum standard / small) b. Basic Refuge (minimum standard / medium) c. Basic Refuge (minimum standard / large) d. Corral Crossing (large) (for 50m long based on B&BLC Design)	\$30,000 each \$45,000 each \$60,000 each \$200,000 each	
2	Pram Ramps	a. Basic	\$1,000 each	
3	School Crossing	a. With kerb blisters b. Without kerb blisters	\$15,000 each \$5,000 each	
4	Kerb Build Out	a. With shoulder seal b. Without shoulder seal	\$180 sq.m \$150 sq.m	
5	Traffic Signals	a. Kinghorne Street & Worrige Street b. Kalandar Street & Wallace Street c. Princes Highway & Croobyar Road d. Adjust existing signals to include pedestrian crossing	\$180,000 item \$200,000 item \$250,000 item \$10,000 item	
6	Pedestrian Fence	a. RTA Crash Tested suitable for Refuge or Median 1.05 high b. Alternative Fencing suitable for median / channelise 1.8m high c. Pool Fencing suitable for median (not recommended adjacent high pedestrian desirelines)	\$260 lin.m \$130 lin.m \$100 lin.m	
7	Roundabout	a. Small / retrofit to existing kerb returns, including painted splitter island b. Small / some kerb returns and raised splitter islands c. Medium single lane / full refuge in splitter islands d. Splitter islands only on existing roundabout - small - large	\$45,000 each \$60,000 each \$150,000 each \$4,000 each \$7,000 each	
8	Cut away in traffic island		\$2,500 each	
9	Princes Highway main street treatment	Including parking adjustment, median with landscaping (note no allowance for street furniture, blisters or additional kerb works or adjacent median, however pavement strengthening has been allowed for) a. All concrete median 1.2m wide b. All concrete median 3.0m wide c. Concrete kerb / landscaping incl. Drainage/trees/plants 3.0m d. Concrete median 3.0m with sandstone wall	\$420 lin.m \$645 lin.m \$825 lin.m \$975 lin.m	
10	Pedestrian Survey		\$500 each	
11	Path Lights in Park	a. Assume existing power / street lighting is adjacent to the park - up to 50m run in	\$3,000 each	
12	Street Sign	a. Fingerboard	\$150 each	
13	Give Way Treatment at Intersection	a. Including linemarking	\$400 each	
14	School Speed Zone	a. Dependent on size of zone and number of streets to be covered assume one pair of signs or markings	\$2,000 pair	
15	Guard Rail	a. Guard Rail b. End Treatments	\$220 lin.m \$2,000 each	
16	Street Light and Pole	a. Light and Pole assuming no existing street lighting b. Light only, assuming power and pole can be utilised	\$5,000 each \$3,000 each	
17	Concrete Ramp	a. Assume 15m length ramp, 1.5m wide	\$425 lin.m	
18	Relocate small sign		\$220 each	
19	Rearrange marking	a. Blackout and re-linemark spaces in large car park (no kerb works)	\$40 parking space	
20	Concrete Footpath		\$65 sq.m	
21	Re-grade dirt road	a. assume import 1 tonne of material and grading	\$1,347 item	
22	Paving	a. assume interlocking street paving	\$65 sq.m	
23	Pedestrian Crossing Linemarking	a. 8 x 3.6m by 0.6m painted transverse lines	\$346 each	

Notes:

1. Costs exclude GST.
2. Costs are indicative only. They do not include cost items such as project management, survey or design, etc.
3. Costs do not include contingencies.
4. Costs may change during the detailed design stage.

Notes:

Paving rate from Rawlinsons (2000) (\$58/sq.m and increased to include profit, appreciation of costs from 2000, change from Sydney to Huskisson)
Pedestrian crossing \$20/sq.m from Penrith Road Maintenance contract
Regrade dirt road costs from Penrith Road Maintenance contract

COUNCIL REFERENCE: 27860
CONTACT PERSON: Gordon Clark

«Organisation»
«Address»

4th February, 2003

Dear Sir/Madam

Request for Preliminary Input/Comment
Preparation of Shoalhaven Pedestrian Access & Mobility Plan (PAMP) Stage 2 and
Review of Shoalhaven Bicycle Strategy

With funding assistance provided by the Roads & Traffic Authority (RTA), Council will shortly engage consultants to assist with the preparation of Stage 2 of the Shoalhaven Pedestrian Access & Mobility Plan (PAMP) and a review of Shoalhaven Bicycle Strategy. To assist the consultants, Council is seeking your input or comments on the pedestrian and/or bicycle needs of your area or community.

To assist in this regard, the following is a brief overview of both plans:

Shoalhaven PAMP

The existing PAMP Stage 1 was prepared for Council by consultants Sinclair Mertz Pty Ltd and was adopted by Council in October 2001. The PAMP Stage 1 covers the City's major urban areas of Nowra/Bomaderry, Jervis Bay/St Georges Basin and Milton/Ulladulla.

The existing PAMP Stage 1 looks at the pedestrian needs in the three areas and presents a list of works required to improve pedestrian access and mobility.

The PAMP Stage 2 will look at the pedestrian needs in the remaining urban areas of the City, outside the areas covered in Stage 1. Again, PAMP Stage 2 will also present a list of works required to improve pedestrian access and mobility in these areas. Also, as part of this project, the need to establish a City wide priority listing for required pedestrian improvement works and opportunities for integration with projects/works identified in the Shoalhaven Bicycle Strategy will be addressed.

Shoalhaven Bicycle Strategy

The existing Bicycle Strategy was prepared by Council with the assistance of a community advisory committee and was adopted by Council in December 1997. The existing Strategy covers a range of urban areas throughout the City and currently recommends the construction of the main "spine" bicycle routes in the Nowra/Bomaderry, Jervis Bay/St Georges Basin, Sussex Inlet and Milton/Ulladulla urban areas.

Since the Strategy's release in 1997 good progress has been made toward the completion of the majority of the 12 currently nominated priority projects. The proposed Strategy review will focus on, amongst others, the formulating of a list of priority projects for insertion into the Strategy for the coming 10-year period. The review will also look at other aspects of the current Strategy, such as the adequacy of the proposed bicycle routes and the inclusion of other areas not currently covered by the Strategy.

To assist the consultants in their task, Council has written to all principal consultative bodies and relevant special interest groups in the Shoalhaven to seek their preliminary input into this project. Any comments or submissions received will be collated by Council and provided to the consultants for review and consideration in the PAMP Stage 2 or Bicycle Strategy review.

As such your thoughts on this project are sought – specifically, you may wish to consider and present what you see as the pedestrian and bicycle needs of your area or group. In this regard you should consider how any pedestrian or bicycle proposals or routes presented or requested sit against the following criteria that will be used, amongst others, to determine the priority of projects:

- Use by high risk age groups (eg elderly and school children)
- Combined usage (used by mix of pedestrians and cyclists)
- Traffic volumes
- Safety issues (eg sight distance problems – blind corners, crests etc)
- Special factors (eg adjacent land uses – schools, community facilities etc)
- Speed zoning
- Accident histories

Given that Council intends to commission the consultants in the near future, your submissions in this regard are sought by **Friday 14 March 2003** at the latest. Please include the following file reference on any submission – 27860.

There will be opportunities for continued input into this project and the draft PAMP Stage 2 and Bicycle Strategy review will be publicly exhibited for comment prior to their finalisation later this year.

Should you have any queries in this regard please contact Gordon Clark in Council's Planning Services Division (4429 3355) or David Pym in Council's City Services Division (4429 3305).

Yours faithfully



Gordon Clark
Senior Strategic Planner

Organisation

Bomaderry High School
Nowra Anglican College
Nowra Christian Community School
Nowra High School
Scots College Glengarry
Shoalhaven Anglican School
St John The Evangelist High School
Ulladulla High School
Vincentia High School
Berry Primary School
Bomaderry Primary School
Cambewarra Primary School
Culburra Public School
Falls Creek Public School
Greenwell Point Primary School
Huskisson Public School
Illaroo Road Public School
Jervis Bay Christian Community School
Jervis Bay Primary School
Kangaroo Valley Primary School
Milton Public School
North Nowra Primary School
Nowra Christian Community School
Nowra East Primary School
Nowra Hill Primary School

Address

PO Box 146
BOMADERRY NSW 2541
PO Box 382
BOMADERRY NSW 2541
PO Box 620
NOWRA NSW 2541
PO Box 183
NOWRA NSW 2541
Jack's Corner Road
KANGAROO VALLEY NSW 2577
PO Box 32
MILTON NSW 2538
PO Box 1046
NOWRA NSW 2541
PO Box 132
ULLADULLA NSW 2539
142 The Wool Road
VINCENTIA NSW 2540
40 Victoria Street
BERRY NSW 2535
Cambewarra Road
BOMADERRY NSW 2541
Kalinga Street
CAMBEWARRA NSW 2540
Carlton Crescent
CULBURRA NSW 2540
26 Vidler Street
FALLS CREEK NSW 2540
Main Road
GREENWELL POINT NSW 2540
Sydney Street
HUSKISSON NSW 2540
Illaroo Road
NOWRA NORTH NSW 2541
PO Box 120
VINCENTIA NSW 2540
JERVIS BAY ACT 2540
Main Road
KANGAROO VALLEY NSW 2577
PO Box 11
MILTON NSW 2538
Judith Drive
NORTH NOWRA NSW 2541
Old Southern Road
NOWRA NSW 2541
Jervis Street
NOWRA NSW 2541
HMAS Albatross
NOWRA NSW 2541

Nowra Primary School	Plunkett Street NOWRA NSW 2541
Sanctuary Point Primary School	Idlewild Avenue SANCTUARY POINT NSW 2540
Shoalhaven Anglican School	Princes Highway BOMADERRY NSW 2541
Shoalhaven Heads Primary School	Ravenscliffe Road SHOALHAVEN HEADS NSW 2535
St Georges Basin Public School	Tallyan Point Road ST GEORGES BASIN NSW 2540
St Marys Star of the Sea School	Corks Lane MILTON NSW 2538
St Michaels School	North Street NOWRA NSW 2541
Sussex Inlet Primary School	Thomson Street SUSSEX INLET NSW 2540
Terara Primary School	Millbank Road TERARA NSW 2540
Tomerong Public School	355 Hawken Road TOMERONG NSW 2540
Ulladulla Public School	PO Box 335 ULLADULLA NSW 2539
Vincentia Primary School	The Wool Road VINCENTIA NSW 2540
Bawley Pointt/Kioloa Ratepayers & Residents Association	C/- 274 Murramarang Street BAWLEY POINT NSW 2539
Berry Small Towns Alliance	C/- Kangaroo Valley Newsagency KANGAROO VALLEY NSW 2577
Bugong Community Group	PO Box 98 KANGAROO VALLEY NSW 2577
Burrier Progress Association	171A Burrier Road BURRIER NSW 2541
Burrill Lake & District Progress Association	PO Box 30 BURRILL LAKE NSW 2539
Callala Bay Progress Association	C/- Boorawine Terrace CALLALA BAY NSW 2540
Callala Beach Progress Association	C/- Post Office CALLALA BEACH NSW 2540
Cambewarra Residents & Ratepayers Association	C/- PO Box 178 CAMBEWARRA NSW 2540
Culburra Beach Progress Association Inc	PO Box 135 CULBURRA BEACH NSW 2540
Currarong Progress Association	C/- 233 Rowntree Street BIRCHGROVE NSW 2041
Lake Conjola & Districts Progress Association	2 Conley Avenue LAKE CONJOLA NSW 2539
Manyana District Citizens Assn	C/- 7 The Barbette MANYANA NSW 2539
Milton/Ulladulla Chamber of Tourism & Business	PO Box 450 ULLADULLA NSW 2539
Murramarang Progress Association	C/- PO Box 295 BATEMANS BAY NSW 2536

Narrawallee Residents & Ratepayers Association	37 Matron Porter Drive NARRAWALLEE NSW 2539
Orient Point Progress Association	C/- D Roberts PO Box 34 ORIENT POINT NSW 2540
Shoalhaven Heads Progress & Community Association	19 Bolt Street SHOALHAVEN HEADS NSW 2535
St Georges Basin & Environs Community Forum	C/- PO Box 37 ST GEORGES BASIN NSW 2540
Sussex Inlet & Districts Community Forum	132 Jacobs Drive SUSSEX INLET NSW 2540
Tabourie Lake Ratepayers & Residents Association	C/- Post Office LAKE TABOURIE NSW 2539
Tomerong Community Forum	C/- Post Office TOMERONG NSW 2540
Vincentia Ratepayers & Residents Association	297 Elizabeth Drive VINCENTIA NSW 2540
Cambewarra Alliance	34 Ironbark Road WEST CAMBEWARRA NSW 2540
Colin Andrews	C/- Kangaroo Valley Newsagency KANGAROO VALLEY NSW 2577
Cudmirrah/Berrara Progress Association	PO Box 50 CUDMIRRAH NSW 2540
Dolphin Point Residents' Action Group	C/- 18 Bonnie Troon Close DOLPHIN POINT NSW 2539
Erowal Bay & District Progress Assn	PO Box 1 EROWAL BAY NSW 2540
Hyams Beach Villagers Association	94 Cyrus Street HYAMS BEACH NSW 2540
Jervis Bay Marine Park	PO Box 89 HUSKISSON NSW 2540
Jervis Bay Tourism	PO Box 123 HUSKISSON NSW 2540
Kangaroo Valley Community Association	PO Box 9 KANGAROO VALLEY NSW 2577
Lake Wollumboola Task Force	C/- 233 Rowntree Street BIRCHGROVE NSW 2041
Radio 2ST	McMahons Road NORTH NOWRA NSW 2541
Chamber of Commerce & Tourism Huskisson	PO Box 140 HUSKISSON NSW 2540
Shoalhaven Bicycle Users Group	12 Maybern Close NORTH NOWRA NSW 2541
People for Access	PO Box 413 NOWRA NSW 2541
Healthy Cities Shoalhaven	PO Box 125 ULLADULLA NSW 2539
Shoalhaven Road Safety Group	PO Box 1253 NOWRA NSW 2541
Shoalhaven North Health Action Group	PO Box 55 NOWRA NSW 2541

Wandandian Progress Association Inc	D2683 Princes Highway WANDANDIAN NSW 2540
Upper Kangaroo River Progress Association	PO Box 42 KANGAROO VALLEY NSW 2577
Swanhaven Progress Association	15/236 Edgecliff Road WOOLLAHRA NSW 2025
South Nowra Progress Association	20 Central Avenue SOUTH NOWRA NSW 2541
Fishermans Paradise Precinct Committee, Neighbourhood Watch Community Caring	C/- 15 Anglers Parade FISHERMANS PARADISE NSW 2539
Terara Residents Association	The Old House Fox Street TERARA NSW 2540
Berry Small Towns Alliance	PO Box 202 BERRY NSW 2535
Bay and Basin Community Resources Inc	PO Box 30 SANCTUARY POINT NSW 2540
Shoalhaven Neighbourhood Centre Incorporated	134 Kinghorne Street NOWRA NSW 2541
Shoalhaven North Interagency	PO Box 604 NOWRA NSW 2541
Milton Ulladulla Interagency	PO Box 583 ULLADULLA NSW 2539
Bay and Basin Interagency	PO Box 30 SANCTUARY POINT NSW 2540
National Senior Association - Nowra and Districts Branch Inc	PO Box 99 GERRINGONG NSW 2534
Association of Independent Retirees - Nowra Branch	PO Box 260 NOWRA NSW 2541
St Georges Basin Health and Community Transport Service Inc	PO Box 111 SANCTUARY POINT NSW 2540
Shoalhaven Community Transport Service Inc	PO Box 672 NOWRA NSW 2541
Shoalhaven Community Transport Service - Southern Shoalhaven	PO Box 108 MILTON NSW 2538
Culburra and Districts Community Health Service Inc	PO Box 76 CULBURRA BEACH NSW 2540
Community Transport Aid Ulladulla Milton and Districts Inc	PO Box 268 ULLADULLA NSW 2539
Culburra Taxis	PO Box 54 CULBURRA BEACH NSW 2540
Milton-Ulladulla Taxi Service	7 Aroo Road ULLADULLA NSW 2539
Nowra Radio Taxi Co-op	3/62 North Street NOWRA NSW 2541
Bus and Coach Association	PO Box 644 ULLADULLA NSW 2539
Mrs Joanna Gash, MP Federal Member for Gilmore	PO Box 1009 NOWRA NSW 2541
Mr Wayne Smith, MP Member for South Coast	PO Box 1436 NOWRA NSW 2541

Mr Matthew Brown, MP
Member for Kiama
Ms Peta Seaton, MP
Member for Southern Highlands
Mr Russell Smith, MP
Member for Bega

Terralong House
125 Terralong Street
KIAMA NSW 2533
PO Box 684
BOWRAL NSW 2576
PO Box 758
BEGA NSW 2550

APPENDIX 4

PROJECT	VILLAGE	FROM	TO	EST.COST	COMMENTS	
Draft 5 Year Cycleway Program based on forecast funding of \$1,684,000						
Forward investigation and design		\$10,000 per annum		\$50,000		
Cycle Racks	Various	\$5,000 per annum		\$25,000		
On Road Facilities - Signs & Lines only		\$5,000 per annum		\$25,000		
Wool Rd	St Georges Basin	Dean St	Basin Rd	\$65,000	Complete Basin View to St Georges Basin route	
Mitchell Pde (through reserve)	Mollymook	Ocean St	No 2 Mitchell Pde	\$90,000	Works in progress	
Albatross Rd/Flinders Rd intersection, South Nowra				\$20,000		
Kerry St	Sanctuary Point	Paradise Beach Rd	Jean St	\$150,000	Stage 1 of Sanctuary Point to St Georges Basin	
Mitchell Pde	Mollymook	Blackwater Ck	Donlon Pde (sth end)	\$90,000	Funded in 2006/07	
Emmett St/Chisholm St	Callala Bay	Playing Fields	Doctors (Chisholm St)	\$48,000		
White Sands Tourist Park	Huskisson	Stage 2		\$150,000	Completes Voyager Park to Vincentia route	
Princes Highway	Ulladulla	Kings Pt Dr	Pitman Ave	\$110,000	Includes pedestrian bridge over Racecourse Ck	
Page Ave	North Nowra	North Nowra Shops to school via Page Ave		\$85,000		
Beinda Street	Bomaderry	Nowra TAFE	Brinawarr Street	\$30,000	No footpath on either side - Access to Nowra TAFE. Funded in 2006/07 as joint project with TAFE.	
Mitchell Pde	Mollymook	Donlon Pde (sth end)	Mollymook shops	\$180,000		
Park Row	Orient Pt	Full length		\$210,000		
McMahons Rd	North Nowra	Widen footpath to Judith Dr & new from Judith Dr to 2ST			\$160,000	
Kerry St	Sanctuary Point	Jean St	Anson St	\$150,000		
Lennox Rd	Callala Beach	Greenway	Watts	\$60,000		
Additional High Priority Projects (in priority order) for consideration						
Greenway Rd	Callala Beach	Callala Beach Rd	Lennox Rd	\$110,000		
Judith Drive	North Nowra	McMahons Rd to school		\$85,000		
Springs Rd		Cudmirrah	Swanhaven	\$450,000		
Cambewarra Road	Bomaderry	Meroo Road	Primary School	\$65,000		
Springs Rd		Swanhaven	Primary School	\$240,000		
Quay Rd	Callala Beach	Princess	Callala Beach Rd	\$210,000		
Lackersteen St	Callala Bay	Footbridge	Chisholm St	\$240,000		
			Total for all projects:	\$3,098,000		
			Predicted 5 Year Budget	\$1,684,000		

APPENDIX 4

PROJECT	VILLAGE	FROM	TO	EST.COST	COMMENTS
Draft 5 Year Footpath Program based on forecast funding of \$1,130,000					
Forward investigation and design		\$10,000/yr		\$50,000	
Finch Pl/Nielson Rd	Sussex Inlet	provide link between roads		\$15,000	<i>Funded 2006/07</i>
Princes Highway	Bomaderry	Complete Cambewarra Rd to Bridge		\$100,000	
Lyndhurst Dr	Bomaderry	Jasmine Dr	Helsinki Pde	\$80,000	<i>Funded 2006/07</i>
Gordon Street	Milton	Croobyar Road	Princes Highway	\$20,000	
Illaroo Rd	North Nowra	Phillip Ave	Halcott Ave	\$60,000	
Jacobs Dr	Sussex Inlet	Bridge	Sandpiper Way	\$42,000	
Coomea Street	Bomaderry	Birreley Street	Cambewarra Road	\$20,000	Completes link
Lyons Rd	Sussex Inlet	River Rd	Sussex Rd	\$45,000	
Hillcrest Ave	South Nowra	Holloway Rd	Old Southern Rd	\$80,000	
Albatross Road	Nowra	McLean Street	Kalandar Street	\$60,000	
Village Dr	Ulladulla	North St	Green St	\$60,000	
Lyndhurst Dr	Bomaderry	Cambewarra Rd	Carisbrook Cl	\$75,000	
South Street	Ulladulla	Princes Highway	St Vincent Street	\$40,000	
Greenwell Pt Rd	Worrigea	Raleigh Dr	Clipper Rd	\$40,000	
North St	Ulladulla	Highway	Jindelara Rd	\$50,000	
Park Road	East Nowra	Clipper Road	Holloway Drive	\$25,000	
MacGibbon Parade	Old Erawal Bay	The Wool Road	McGowen Street	\$85,000	
Church Street	Milton	Thomas Street	Princes Highway	\$30,000	
Mitchell Parade	Mollymook	Tallwood Avenue	Bannister Head Road	\$50,000	
Wason Street	Milton	Croobyar Road	Charles Street	\$30,000	
Princes Highway	Milton	Croobyar Rd	retirement village	\$35,000	
Tomerong Street	Huskisson	Sydney Street	Woollamia Road	\$25,000	
Fegen Street	Huskisson	Bowen Street	Nowra Street	\$22,000	
Additional High Priority Projects (in priority order) for consideration					
Osborne Street	Nowra	North Street	Hyam Street	\$45,000	
Nowra Street	Huskisson	Fegen Street	Beach Street	\$16,000	
The Wool Road	Basin View	John Street	Tallyan Point Road	\$35,000	
Sydney Street	Huskisson	Tomerong Street	Watt Street	\$15,000	
Shoalhaven Street	Nowra	Douglas Street	Junction Street	\$75,000	
Brinwarr Street	Bomaderry	Property No. 46	Tarawara Street	\$25,000	
Kangaroo Valley Rd	Berry	North Street	Bundewallah Rd	\$100,000	
Jervis Street	Greenwell Point	Greenwell Point Road	School	\$18,000	
River Road	Lake Tabourie	Lyra Drive	Bridge	\$40,000	
Isa Road	Worrigea	Old Southern Road	Worigee Rd	\$90,000	
Deering Street	Ulladulla	Camden Street	St Vincent Street	\$30,000	
Emmett Street	Callala Bay	Sports Ground	Australia Av	\$30,000	
Barwon Street	Bomaderry	Bunberra Street	Cambewarra Road	\$45,000	
Princes Highway	East Nowra	Park Road	McKay Street	\$25,000	
Bunberra Street	Bomaderry	Tarawal Street	Brinawarr Street	\$55,000	
Scenic Drive	Nowra	Swimming Pool	Shoalhaven Street	\$30,000	
				Total for all projects:	\$1,813,000



Pedestrian Access & Mobility Plan (PAMP)

List of Maps

Bangalee	PL.REF 4595-10	Greenwell Point	PL.REF 4595-22	Sanctuary Point	PL.REF 4595-38
Basin Area	PL.REF 4595-36	Huskisson	PL.REF 4595-31	Shoalhaven Heads	PL.REF 4595-07
Basin View	PL.REF 4595-42	Kangaroo Valley	PL.REF 4595-01	Shoalhaven Heads	PL.REF 4595-08
Bawley Point	PL.REF 4595-65	Kangaroo Valley	PL.REF 4595-02	South Nowra	PL.REF 4595-19
Bawley Point	PL.REF 4595-66	Kangaroo Valley	PL.REF 4595-03	St Georges Basin	PL.REF 4595-40
Bawley Point to Kioloa	PL.REF 4595-67	Kings Point	PL.REF 4595-62	St Georges Basin to Basin View	PL.REF 4595-41
Bendalong	PL.REF 4595-50	Kioloa	PL.REF 4595-68	Sussex Inlet	PL.REF 4595-45
Berry	PL.REF 4595-05	Lake Conjola	PL.REF 4595-52	Sussex Inlet	PL.REF 4595-46
Berry	PL.REF 4595-06	Lake Tabourie	PL.REF 4595-64	Sussex Inlet Area	PL.REF 4595-44
Bomaderry	PL.REF 4595-13	Manyana & Cunjurong Point	PL.REF 4595-51	Swanhaven	PL.REF 4595-47
Bomaderry	PL.REF 4595-14	Milton	PL.REF 4595-54	Swanhaven to Cudmirrah	PL.REF 4595-48
Bomaderry / Shoalhaven Heads	PL.REF 4595-04	Mollymook	PL.REF 4595-57	Tomerong	PL.REF 4595-43
Burrill Lake	PL.REF 4595-61	Mollymook Beach	PL.REF 4595-56	Ulladulla	PL.REF 4595-58
Callala Bay	PL.REF 4595-27	Myola & Woollamia	PL.REF 4595-29	Ulladulla	PL.REF 4595-59
Callala Beach	PL.REF 4595-28	Narrawallee	PL.REF 4595-55	Ulladulla	PL.REF 4595-60
Cambewarra	PL.REF 4595-09	North Nowra	PL.REF 4595-11	Ulladulla Area	PL.REF 4595-53
Cudmirrah & Berrara	PL.REF 4595-49	North Nowra	PL.REF 4595-12	Vincentia	PL.REF 4595-32
Culburra Beach	PL.REF 4595-24	Nowra	PL.REF 4595-16	Vincentia	PL.REF 4595-33
Culburra Beach	PL.REF 4595-25	Nowra	PL.REF 4595-17	Vincentia	PL.REF 4595-34
Currarong	PL.REF 4595-26	Nowra	PL.REF 4595-18	West Nowra	PL.REF 4595-20
Dolphin Point	PL.REF 4595-63	Nowra / Greenwell Point	PL.REF 4595-15	Worrigeer	PL.REF 4595-21
Erowal Bay	PL.REF 4595-39	Orient Point & Crookhaven	PL.REF 4595-23	Worworing to Sanctuary Point	PL.REF 4595-35
Falls Creek / Woollamia	PL.REF 4595-30	Sanctuary Point	PL.REF 4595-37		