

26 September 2008
Ref No: 1154675

Chief Executive Officer
Bicycle NSW
GPO Box 272
SYDNEY NSW 2001

Attention: Mr Alex Unwin

Dear Alex

Ballina and Lennox Head cycleways / shared paths

GeoLINK has been engaged by Ballina Shire Council to conduct the route selection process and subsequent design of two sections of cycleway / shared path. The two sections are:

- Between the end of the existing shared path at Rutherford Street, Lennox Head and the Ballina-Byron shire boundary; and
- Between the end of the Kerry Saxby Walkway (shared path) near Regatta St and the existing shared path at the corner of Kalinga Street and Quays Drive in West Ballina.

We have identified a number of preliminary route options for these sections, the majority of which are on existing roads or tracks. They are shown on the attached illustrations. These are preliminary options only and we welcome further suggestions.

We are seeking your input on this project and will follow up this letter with a phone call. In the meantime, please do not hesitate to contact me by email on charlie@geolink.net.au or by telephone on 6687 7666.

Thanks, in advance, for your consideration and input.

Yours faithfully
GeoLINK



Charlie Hewitt
Environmental Engineer

Att: Illustration 1 – Ballina Cycleway / Shared Path Options
Illustration 2 – Lennox Head Cycleway / Shared Path Options

ABN 79 896 839 729
ACN 101 084 557

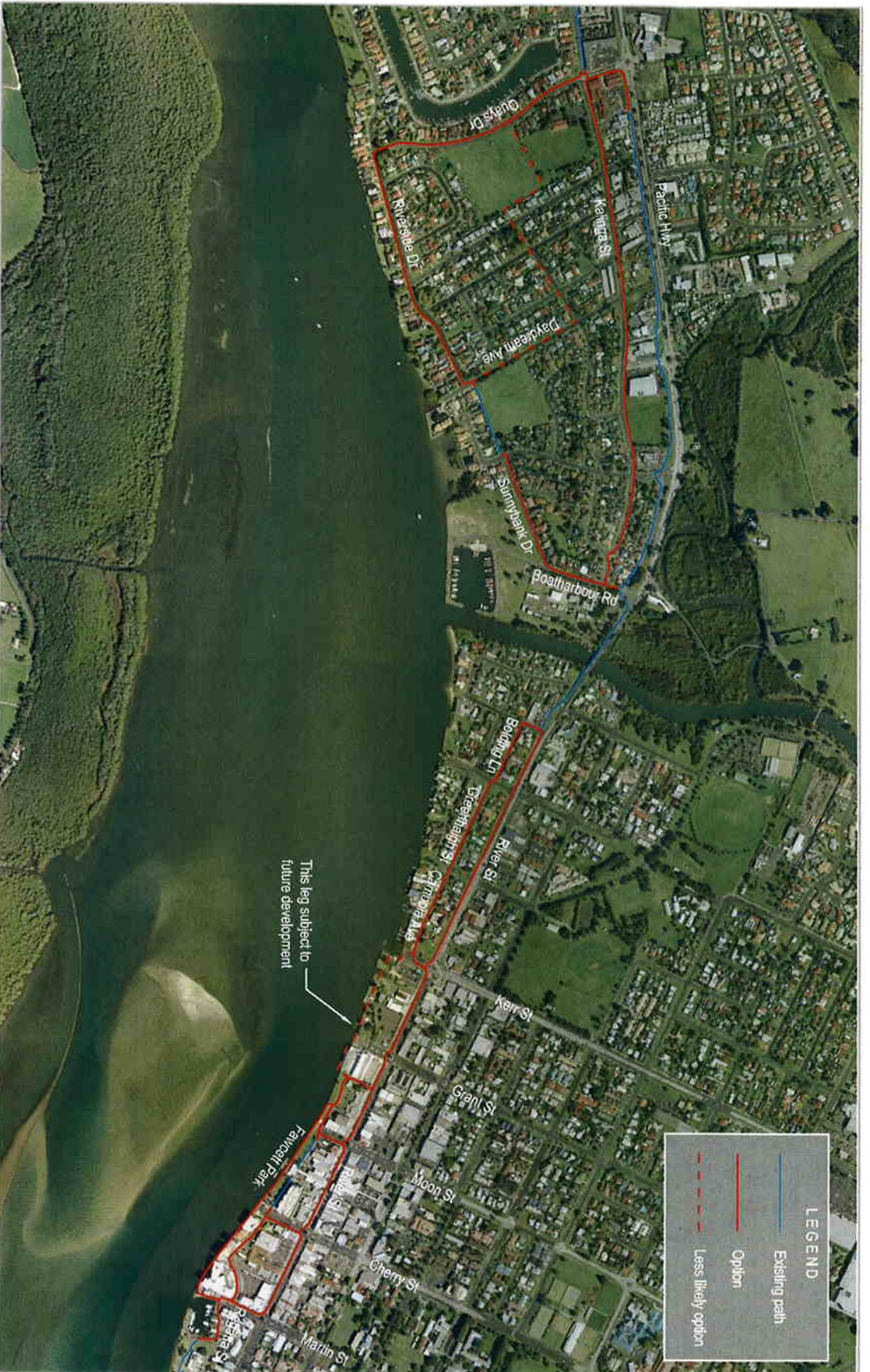
Return address:
PO Box 9
Lennox Head
NSW 2478

LENNOX HEAD
T 02 6687 7666
F 02 6687 7782

COFFS HARBOUR
T 02 6651 7666
F 02 6651 7733

www.geolink.net.au





LEGEND

- Existing path
- Option
- Less likely option

This leg subject to future development

Ballina Cycleway / Shared Path Options



GeoLINK

Lennox and Ballina Cycleway / Shared Path
1154445



0 500

