



Box 589, PO Sutherland NSW 1499 | [www.sharkbike.org.au](http://www.sharkbike.org.au)

2 December 2008

## **Sydney State Bike Plan workshop**

Sutherland Shire

**Project name:** Woolooware Bay Shared Pathway, Stage 6

**Description:** Part of the Botany Bay Trail. The Botany Bay Trail has been classified by the Dept of Planning as a high priority and SSROC has consultants currently finalising the Botany Bay Trail Master Plan.

*Within two years, this will be the only section of off-road shared pathway not constructed between Captain Cook Bridge and Wanda Beach. (NOTE: This connects with the Botany Bay Cycleway and Cooks River Cycleway providing an attractive cycling route between Kurnell and Parramatta.)*

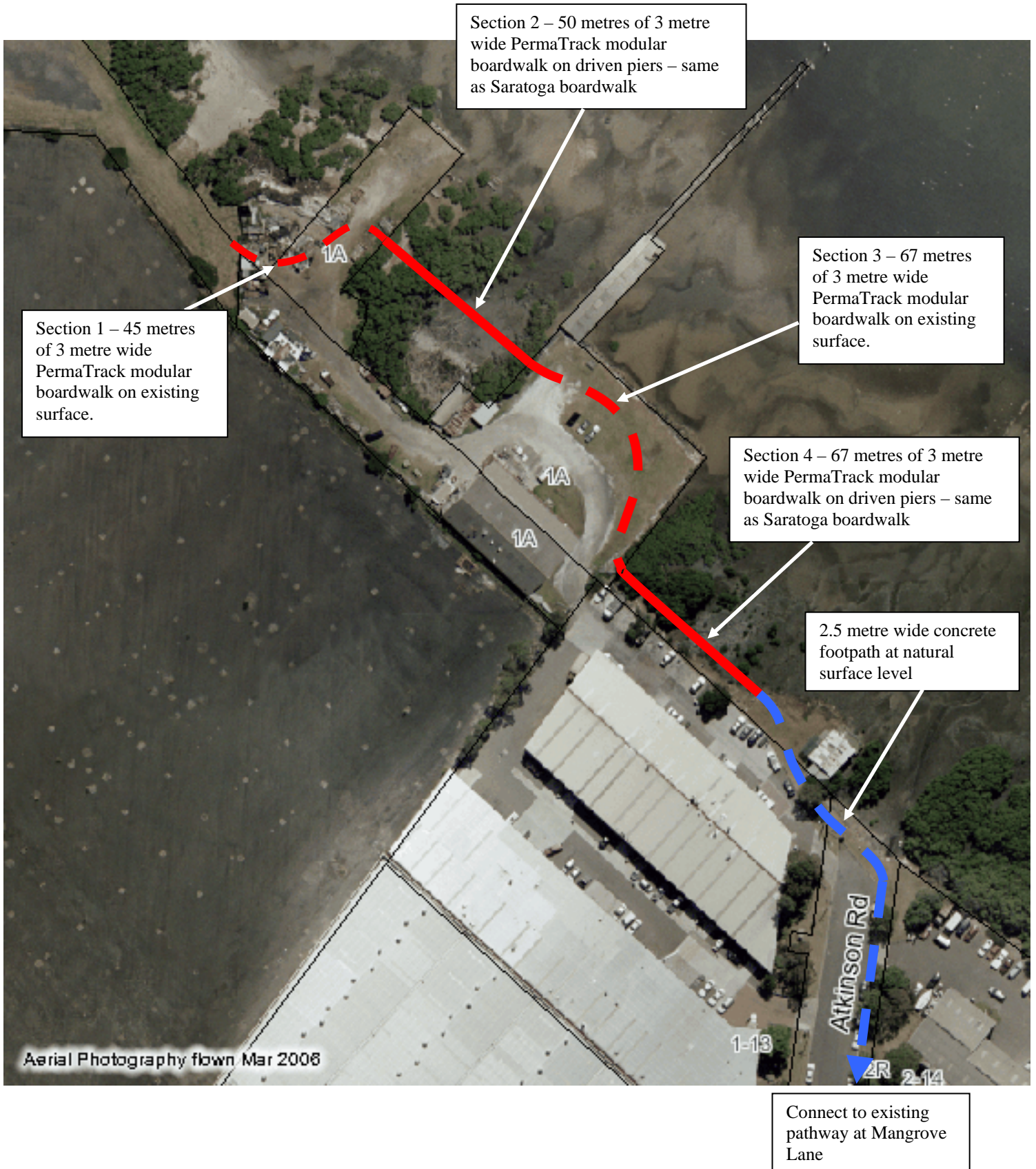
**Estimated cost:** Boardwalk \$546,100; adjacent pathway \$150,000

**Contact details:** Jenni Gormley, SharkBike, ph 0404 065 376, Mark Chigwidden, Sutherland Shire Council, 9710 0333

**Project details:** See attached

2008\_10\_31\_Sketch\_for\_Rocla\_to\_\_2-0

2008\_10\_31\_Stage\_6\_Woolooware\_B\_1-0



**Woollooware Bay Shared Pathway – Stage 6**  
**Sketch for Quotation – PermaTrack Modular Boardwalk System**

